

# **Appendix B**

## **Planning Process**

## Anna Gill

---

**From:** Anna Gill  
**Sent:** Thursday, October 20, 2022 3:15 PM  
**To:** 'ald@missourimetalcraft.com'; 'Bethel (vobclerk@marktwain.net)'; 'Cindy Bowman (cindyb@cityofclareance.com)'; 'Dennie Carothers (denniec@cityofclareance.com)'; 'Dennis Klusmeyer (administrator@cityofshelbina.com)'; 'Hunnewell (hunnewellclerk@centurytel.net)'; 'mayorknapp@cityofclareance.com'; Michael Vanskike (shelbyville@marktwain.net); 'Shelby Clerk (shelby@sos.mo.gov)'; 'Theresa Malcarne (jmalcarne@marktwain.net)'; 'Tim Lacy (cityclerk@cityofshelbina.com)'; 'Tracy Smith (shelbytr@marktwain.net)'; 'Molly Maddox'; 'MAYOR@CITYOFCLARENCE.COM'; 'Tom Shively (tshively@marktwain.net)'; 'Glenn Eagan (geagan@centurytel.net)'; 'Terry Mefford'; 'Shelby County'; 'tinnac@nshelby.k12.mo.us'; 'tclawson@cardinals.k12.mo.us'  
**Cc:** Cindy Hultz; Devyn Campbell  
**Subject:** Shelby County Multi-Jurisdictional Hazard Mitigation Plan Meeting

**Please confirm your attendance or provide contact information for your designated alternate by responding to Anna Gill at 573-565-2203 or [agill@marktwaincog.com](mailto:agill@marktwaincog.com)**

On behalf of Shelby County, you are invited to a planning meeting to update the Shelby County Multi-Jurisdictional Hazard Mitigation Plan.

**Shelby County Multi-Jurisdictional Hazard Mitigation Plan Update  
Planning Meeting  
November 14, 2022  
Meeting Time: 10:00 a.m.  
Place: Shelby County - University of Missouri Extension Office  
Address: 106 E 3<sup>rd</sup> Street, Shelbyville, MO**

Shelby County is beginning the process to update the Shelby County Multi-Jurisdictional Hazard Mitigation Plan to better protect the people and property of Shelby County from the effects of natural hazard events. The existing plan was approved by FEMA in 2018. The plan update will be prepared pursuant to the requirements of the Disaster Mitigation Act of 2000 (Public Law 106-390) and the implementing regulations. These regulations establish the requirements that hazard mitigation plans must meet in order for Shelby County and the participating jurisdictions, to be eligible for certain federal disaster assistance and hazard mitigation funding under the Robert T. Stafford Disaster Relief and Emergency Act (Public Law 93-288). Because Shelby County is subject to many kinds of hazards, access to these federal programs is vital.

### **What is a Hazard Mitigation Plan?**

A hazard mitigation plan is the result of a planning process which identifies policies and actions that can be implemented over the long term to reduce the risk and future losses resulting from hazard events. The Shelby County Multi-Jurisdictional Hazard Mitigation Plan Update will address a comprehensive list of natural hazards likely to impact the County. The identified mitigation policies and actions will be based on an assessment of hazards, vulnerabilities, and risks.

The hazard mitigation planning process is also heavily dependent on the participation of representatives from local government agencies and departments, the public, and other stakeholder groups. A Hazard Mitigation Planning Committee will be formed to support this project and will include representatives from the County, cities, school

districts, private-non-profit entities, business partners, academic institutions, and other local, state, and federal agencies acting in or serving Shelby County.

**What is My Role in the Planning Process?**

The Mark Twain Regional Council of Governments has taken the lead in updating this plan. The point of contact is Anna Gill, Community Planner. To successfully complete this project and ensure your organization is eligible for FEMA hazard mitigation assistance funding, we need your participation and input. Jurisdictions (including county and city governments and public school districts) that do not participate in an approved Hazard Mitigation Plan are NOT eligible to apply for FEMA’s Hazard Mitigation Assistance grants. Participation in the planning process will include:

- Attending and contributing in the planning committee meeting;
- Providing requested data (as available);
- Reviewing and providing comments on plan drafts;
- Advertising, coordinating, and participating in the public input process; and
- Coordinating the formal adoption of the plan.

**What can I expect for the planning committee meeting?**

The planning committee will be provided with information on what activities are required to be performed and included in the plan. Required activities include the following:

- Required Activities Include: Participating jurisdictions will be required to complete as much of the data questionnaire as possible, complete critical/essential facilities and non-governments employer form. Review planning meeting PowerPoint including federal planning requirements. Review project timeline.
- Risk Assessment: Review and provide comments on the risk assessment.
- Mitigation Strategy: Updating of existing mitigation actions and identification and development of new mitigation strategies based upon the risk assessment will be completed.

Thanks,  
**Anna Gill**  
**Mark Twain Regional Council of Governments**  
**Community Planner**

42494 Delaware Lane  
Perry, MO 63462  
573-565-2203



mark twain regional  
council of governments

Audrain

Macon

Marion

Monroe

Pike

Ralls

Randolph

Shelby

**Subject: Shelby County Multi-Jurisdictional Hazard Mitigation Plan Meeting**

On behalf of Shelby County, you are invited to the planning meeting to develop the update to the Shelby County Multi-Jurisdictional Hazard Mitigation Plan. Since your business/agency/entity is directly or indirectly connected to Shelby County mitigation activities, you are considered to be a stakeholder in the process. As a stakeholder in Mitigation Planning, you are invited to the upcoming planning meeting. This meeting will focus on updating the mitigation strategy. Mitigation actions, which make up the strategy, are specific activities that can be undertaken in advance to reduce the impacts of hazards.

During the meeting, we will discuss key issues from the risk assessment and participate in a facilitated discussion of the mitigation strategy. This discussion will cover continuing mitigation actions identified in the previous plan as well as identification of any new mitigation actions that should be added to the mitigation strategy to ensure a comprehensive approach to hazard mitigation. In addition, action implementation details will be discussed for both continuing and new actions.

**Shelby County Multi-Jurisdictional Hazard Mitigation Plan Update  
Planning Meeting**

**November 14, 2022**

**Meeting Time: 10:00 a.m.**

**Place: Shelby County - University of Missouri Extension Office**

**Address: 106 E 3<sup>rd</sup> Street, Shelbyville, MO**

The Disaster Mitigation Act of 2000 requires counties, municipalities, school districts, and other jurisdictions to participate in an approved Hazard Mitigation Plan to be eligible for certain federal hazard mitigation funding programs. To qualify as a participant in the plan, authorized representatives for each jurisdiction must participate in development of the plan update. It is essential for the county, incorporated cities, and public-school districts to send at least one individual to the planning meeting detailed above. If you will be unable to attend, please ensure that someone else from your jurisdiction is designated to attend.

The Mark Twain Regional Council of Governments has taken the lead in developing this plan. The point of contact is Anna Gill, Community Planner. To successfully complete this project, we need your participation and input.

Thanks,

**Anna Gill**

**Mark Twain Regional Council of Governments  
Community Planner**

42494 Delaware Lane  
Perry, MO 63462  
573-565-2203  
agill@marktwaincog.com

(573) 565-2203

Fax (573) 565-2205

42494 Delaware Lane

Perry, MO 63462

Mark Twain Regional Council of Governments  
42494 Delaware Lane  
Perry, MO 63462

FIRST-CLASS



US POSTAGE<sup>TM</sup> PITNEY BOWES



ZIP 63462 \$ 000.57<sup>0</sup>  
02 7H  
0001226444 OCT 27 2022

Missouri Rural Electric Cooperative  
Attn: Matt Hudson  
975 W. Ross Street  
Palmyra, MO 63461

Mark Twain Regional Council of Governments  
42494 Delaware Lane  
Perry, MO 63462

FIRST-CLASS



US POSTAGE<sup>IMPITNEY BOWES</sup>



ZIP 63462 \$ 000.57<sup>0</sup>  
02 7H  
0001226444 OCT 27 2022

Salt River Community Care  
Attn: Tim Schrage  
142 Shelby Plaza Road  
Shelbina, MO 63468

Mark Twain Regional Council of Governments  
42494 Delaware Lane  
Perry, MO 63462

FIRST-CLASS



US POSTAGE<sup>IMPITNEY BOWES</sup>



ZIP 63462 \$ 000.57<sup>0</sup>  
02 7H  
0001226444 OCT 27 2022

Clarence Care Center  
Attn: Mark Walker  
111 East Street  
Clarence, MO 63437

Mark Twain Regional Council of Governments  
42494 Delaware Lane  
Perry, MO 63462

FIRST-CLASS



US POSTAGE<sup>TM</sup> PITNEY BOWES



ZIP 63462 \$ 000.57<sup>0</sup>  
02 7H  
0001226444 OCT 27 2022

Shelby County 911  
Attn: Lori Miles  
100 E. Main  
Shelbyville, MO 63469



Mark Twain Regional Council of Governments  
42494 Delaware Lane  
Perry, MO 63462

FIRST-CLASS



US POSTAGE<sup>IMPITNEY BOWES</sup>



ZIP 63462 \$ 000.57<sup>0</sup>  
02 7H  
0001226444 OCT 27 2022

Public Water Supply District of Shelby  
County  
3781 State Highway 15  
Shelbyville, MO 63469

Mark Twain Regional Council of Governments  
42494 Delaware Lane  
Perry, MO 63462

FIRST-CLASS



US POSTAGE IMIPITNEY BOWES



ZIP 63462  
02 7H  
0001226444

**\$ 000.57<sup>0</sup>**

OCT 27 2022

Shelbina Fire Protection District  
204 W Chestnut Street  
Shelbina, MO 63468

Mark Twain Regional Council of Governments  
42494 Delaware Lane  
Perry, MO 63462

FIRST-CLASS



US POSTAGE<sup>TM</sup> PITNEY BOWES



ZIP 63462 \$ 000.57<sup>0</sup>  
02 7H  
0001226444 OCT 27 2022

Clarence Fire Protection District  
114 W Beech Street  
Clarence, MO 63437

Shelby County  
Multi-Jurisdictional Hazard Mitigation Plan Update  
Planning Meeting  
November 14, 2022  
10:00 a.m.

AGENDA

Welcome/Introductions: Devyn Campbell, Fiscal Officer  
Mark Twain Regional Council of Governments

Hazard Mitigation Planning Purpose

Grant Programs Linked to Approved Plan

Planning Tasks/Multijurisdictional Approach

Participation Requirement

Public Involvement/Comments

Data Collection Questionnaires

Discussion of Hazards

Critical Facility Inventory

Plan Update Format

Sample Results of Countywide Risk Assessment Update

Update Mitigation Goals

Mitigation Action Updates

Update the Mitigation Strategy

Status of Previous Actions

Development of New Actions

Prioritization of Mitigation Actions

Plan Maintenance

Hazard Mitigation Assistance Grants

Next Steps

**Table 3: Eligible Activities by Program**

Eligible Activities	HMGP	BRIC	FMA
<b>1. Mitigation Projects</b>	✓	✓	✓
Property Acquisition and Structure Demolition	✓	✓	✓
Property Acquisition and Structure Relocation	✓	✓	✓
Structure Elevation	✓	✓	✓
Mitigation Reconstruction	✓	✓	✓
Dry Floodproofing of Historic Residential Structures	✓	✓	✓
Dry Floodproofing of Non-residential Structures	✓	✓	✓
Generators	✓	✓	
Localized Flood Risk Reduction Projects	✓	✓	✓
Non-localized Flood Risk Reduction Projects	✓	✓	
Structural Retrofitting of Existing Buildings	✓	✓	✓
Non-structural Retrofitting of Existing Buildings and Facilities	✓	✓	✓
Safe Room Construction	✓	✓	
Wind Retrofit for One- and Two-Family Residences	✓	✓	
Infrastructure Retrofit	✓	✓	✓
Soil Stabilization	✓	✓	✓
Wildfire Mitigation	✓	✓	
Post-Disaster Code Enforcement	✓		
Advance Assistance	✓		
5 Percent Initiative Projects	✓		
Miscellaneous/Other <sup>(1)</sup>	✓	✓	✓
<b>2. Hazard Mitigation Planning</b>	✓	✓	✓
Planning Related Activities	✓		
<b>3. Technical Assistance</b>			✓
<b>4. Management Cost</b>	✓	✓	✓

(1) Miscellaneous/Other indicates that any proposed action will be evaluated on its own merit against program requirements. Eligible projects will be approved provided funding is available.





### **Update actions that apply to your jurisdiction**

- Completed – provide date completed and funding amount if applicable
- KEEP Not Started – provide details on any plans made to initiate action
- KEEP In-Progress – provide details on progress made to-date
- KEEP Modify – provide details on changes/updates to the action
- Delete – provide reason for deleting

**Discuss with other representatives from your jurisdiction.**

**Be careful to distinguish between response actions (actions after event) and mitigation actions (actions before an event that reduce or eliminate need for response)**

**Actions should be SMART: specific, measurable, achievable, relevant, time bound**



## Multi-Jurisdictional Local Hazard Mitigation Plan

<b>Action Worksheet</b>	
<b>Name of Jurisdiction:</b>	
<b>Risk / Vulnerability</b>	
<b>Hazard(s) Addressed:</b>	
<b>Problem being Mitigated:</b>	
<b>Action or Project</b>	
<b>Applicable Goal Statement:</b>	
<b>Action/Project Number:</b>	
<b>Name of Action or Project:</b>	
<b>Mitigation Category:</b>	
<b>Action or Project Description:</b>	
<b>Estimated Cost:</b>	
<b>Benefits:</b>	
<b>Plan for Implementation</b>	
<b>Responsible Organization/Department:</b>	
<b>Action/Project Priority:</b>	
<b>Timeline for Completion:</b>	
<b>Potential Fund Sources:</b>	
<b>Local Planning Mechanisms to be Used in Implementation, if any:</b>	
<b>Progress Report</b>	
<b>Action Status:</b>	
<b>Report of Progress:</b>	

Resolution # \_\_\_\_\_

**Adopting the Shelby County Multi-Jurisdictional Local Hazard Mitigation Plan**

**Whereas**, the \_\_\_\_\_ recognizes the threat that natural hazards pose to people and property within our community; and

**Whereas**, undertaking hazard mitigation actions will reduce the potential for harm to people and property from future hazard occurrences; and

**Whereas**, the U.S Congress passed the Disaster Mitigation Act of 2000 (“Disaster Mitigation Act”) emphasizing the need for pre-disaster mitigation of potential hazards;

**Whereas**, the Disaster Mitigation Act made available hazard mitigation grants to state and local governments; and

**Whereas**, an adopted Local Hazard Mitigation Plan is required as a condition of future funding for mitigation projects under multiple FEMA pre- and post-disaster mitigation grant programs; and

**Whereas**, the \_\_\_\_\_ fully participated in the hazard mitigation planning process to prepare this Multi-Jurisdictional Local Hazard Mitigation Plan; and

**Whereas**, the \_\_\_\_\_ desires to comply with the requirements of the Disaster Mitigation Act and to augment its emergency planning efforts by formally adopting the Shelby County Multi-Jurisdictional Local Hazard Mitigation Plan; and

**Whereas**, adoption by the governing body for the \_\_\_\_\_ demonstrates the jurisdictions’ commitment to fulfilling the mitigation goals outlined in this Multi-Jurisdictional Local Hazard Mitigation Plan; and

**Whereas**, adoption of this legitimizes the plan and authorizes responsible agencies to carry out their responsibilities under the plan;

**Now, therefore, be it resolved**, that the \_\_\_\_\_ adopts the “Shelby County Multi-Jurisdictional Local Hazard Mitigation Plan” as an official plan; and

**Be it further resolved**, the \_\_\_\_\_ will submit the updated plan along with this Adoption Resolution to the Missouri State Emergency Management Agency and Federal Emergency Management Agency Region VII officials to enable the plan’s final approval.

Date: \_\_\_\_\_

Certifying Official: \_\_\_\_\_

# SHELBY COUNTY MULTI-JURISDICTIONAL HAZARD MITIGATION PLAN UPDATE PLANNING MEETING—SIGN-IN SHEET

**Project:** Shelby County, Missouri Multi-jurisdictional Hazard Mitigation Plan Update

**Meeting Date/Time:** November 14, 2022  
10:00am

**Facilitator:** Devyn Campbell, Fiscal Officer/Community Planner  
Mark Twain Regional Council of Governments

Shelby County – University of Missouri Extension Office  
106 East 3<sup>rd</sup> Street, Shelbyville, MO 63469

Name	Title	Department/Agency	Email	Phone #	Signature
Troy Clawson	Superintendent	Shelby Co R-IV	tclawson@cardinals.k12.mo.us	573-588-4461	[Signature]
Pennie Carothers	City Admin	Clare	city@claremo.com	660-384-5725	[Signature]
Glenn Eagan	Presiding Commissioner	Shelby Co.	geagan@centurylink.net	573-819-4318	[Signature]
Sina Mesmer	city clerk	City of Shelbyville	shelbyville@marketwain.net	573-633-2500	[Signature]
Sony Muffry	West. Commissioner	Shelby Co.	tlmcjo@xohoo.com	660-651-3250	[Signature]
Doug Krisbaum	Member Services Manager	Missouri Rural Electric Co-op	dkrisbaum@morec.org	573-406-3305	[Signature]
Stephanie Bender	Shelby Co. Clerk	Shelby Co	Shelbyesos.mo.gov	573-633-2181	[Signature]
Peggy Laughlin	office supr	PWSD #1 of Shelby	shelbypwsd@marktwain.net	573-633-2242	[Signature]
Brian Jifer	Asst. Supt.	City of Shelbina	wastewater@cityofshelbina.com	573-588-4444	[Signature]
Dennis Kusmeyer	Supt. - East Com.	Shelby co.	administrators@cityofshelbina.com	573-588-4164	[Signature]
Tom Alway			tblaw@marktwain.com	573-633-2181	[Signature]

Jim Tracy      City of Shelbyville      573-854-4101      my





**SHELBY COUNTY  
MULTI-JURISDICTIONAL HAZARD  
MITIGATION PLAN**

**PLAN UPDATE  
MEETING  
NOVEMBER 14, 2022**

1



**AGENDA**

- Hazard Mitigation Planning Purpose
- Grant Programs Linked to Approved Plan
- Planning Tasks / Multi-jurisdictional Approach
- Participation Requirements
- Public Involvement/Comments
- Data Collection Questionnaires
- Discussion of Hazards
- Critical Facility Inventory

2



**AGENDA**

- Plan Update Format
- Sample Results of Countywide Risk Assessment Update
- Update Mitigation Goals
- Mitigation Action Updates
- Update the Mitigation Strategy
  - Status of Previous Actions
  - Development of New Actions
  - Prioritization of Mitigation Actions
- Hazard Mitigation Assistance Grants
- Plan Maintenance
- Next Steps


3



**WHAT IS MITIGATION?**


- Sustained action taken to reduce or eliminate long-term risk to human life and property from hazard events
- Mitigation planning is a process for communities to:
  - Identify the hazards to which they are at risk;
  - Assess the potential impacts of those hazards;
  - Develop goals, objectives, and actions to reduce impacts; and
  - Prioritize and implement mitigation actions.

4




## DISASTER MITIGATION ACT OF 2000 (DMA 2K)

- Requires local governments to adopt a natural hazard mitigation plan to maintain eligibility for FEMA mitigation funds.
- Plan must be updated and approved by FEMA every 5 years.
- This is an update to the existing 2018 Shelby County Multi-jurisdictional Hazard Mitigation Plan.



5



## PRESIDENTIAL MAJOR DISASTER DECLARATIONS INCLUDING SHELBY COUNTY SINCE 1965

Disaster Number	Description	Declaration Date Incident Period	Individual Assistance (IA) Public Assistance (PA)
132	Severe Storm, Heavy Hail, Tornadoes	04/19/73	PA
407	Flood, Severe Storms	11/11/73	PA
466	Tornado, High Winds, Hail	05/23/75	PA
779	Flood, Severe Storms	09/18/86-10/15/86	PA
995	Flood, Severe Storms	07/09/93	PA
1403	Severe Ice Storm	02/06/2002	PA
1412	Severe Storms	05/06/2002	PA
1483	Severe Storms	05/06/2003	IA, PA
1524	Severe Storms	06/11/2004	IA, PA
1773	Severe Storms	06/25/2008	IA, PA
1809	Severe Storms	11/12/2008	IA, PA
1884	Severe Ice Storm	12/12/2007	IA, PA
3303	Severe Ice Storm	01/30/2009	IA, PA
3317	Severe Storms	03/03/2011	IA, PA
1961	Severe Storms	03/23/2011	PA
1847	Severe Storms	06/19/2009	IA, PA
1934	Severe Storms	06/17/2010	PA
4130	Severe Storms	07/16/2013	PA
4200	Severe Storms	10/31/2014	PA
4238	Severe Storms	06/07/2015	DR
4451	Severe Storms	07/09/2019	DR
1462	COVID-19	03/12/2020	NAI
1460	COVID-19 pandemic	03/26/2020	DR

6



## APPROVED HAZARD MITIGATION PLAN ESTABLISHES ELIGIBILITY FOR FEMA HMA GRANTS

- Hazard Mitigation Grant Program
- Building Resilient Infrastructure & Communities
- Flood Mitigation Assistance Program



7



## HAZARD MITIGATION GRANT PROGRAM

- The Hazard Mitigation Grant Program (HMGP) provides grants to States and local governments to implement long-term hazard mitigation measures after a major disaster declaration.
- Equal to 15 percent (20 percent for Enhanced Plan State) of the first \$2 billion of estimated aggregate amounts of disaster assistance—based on a sliding scale formula after the first \$2 billion.
- Eligible applicants are state agencies, local governments, private non-profit organizations, or Indian tribal governments.
- **An approved local mitigation plan is required.**

8



## BUILDING RESILIENT INFRASTRUCTURE & COMMUNITIES

- Annual Appropriation
- Nationally Competitive Grant
- 75% federal & 25% non-federal match
- FY 2021 Applications due to SEMA in the fall of 2021
  - Each state gets \$575,000
  - SEMA forwards selected applications to FEMA
- **An approved local mitigation plan is required.**

9



## FLOOD MITIGATION ASSISTANCE PROGRAM

- Annual Appropriation
- Sub-applicant must participate in National Flood Insurance Program (NFIP)
- NFIP insured property
- 75% federal & 25% non-federal match
- FY 2021 Applications due to SEMA in the fall
  - SEMA forwards selected applications to FEMA
- **An approved local mitigation plan is required.**

10



## 9 TASKS TO COMPLETE THE PLAN UPDATE

- Task 1: Determine the Planning Area and Resources
- Task 2: Build the Planning Team
- Task 3: Create an Outreach Strategy
- Task 4: Review Community Capabilities
- Task 5: Conduct a Risk Assessment
- Task 6: Develop a Mitigation Strategy
- Task 7: Review and Adopt the Plan
- Task 8: Keep the Plan Current
- Task 9: Create a Safe and Resilient Community

11



## MULTI-JURISDICTIONAL PLAN APPROACH TASK 1: DETERMINE THE PLANNING AREA

- Shelby County Commission
- Bethel
- Clarence
- Hunnewell
- Shelbina
- Shelbyville
- Leonard
- North Shelby School District
- Shelby County School District

12



## HAZARD MITIGATION PLANNING COMMITTEE TASK 2: BUILD THE PLANNING TEAM

<u>Jurisdictions</u>	<u>Stakeholders</u>
<ul style="list-style-type: none"> <li>• Emergency Responders</li> <li>• County Clerks</li> <li>• City Clerks</li> <li>• Elected Officials</li> <li>• Public Works Directors</li> <li>• Floodplain Managers</li> <li>• Stormwater Mangers</li> <li>• County And City Planners</li> <li>• Economic Development Directors</li> <li>• GIS Staff</li> <li>• School Representatives</li> </ul>	<ul style="list-style-type: none"> <li>• Business Partners</li> <li>• Private-non-profits</li> <li>• State Agencies               <ul style="list-style-type: none"> <li>– SEMA</li> <li>– Missouri Department of Natural Resources</li> <li>– Missouri Department of Transportation</li> </ul> </li> <li>• Federal Agencies               <ul style="list-style-type: none"> <li>– Federal Emergency Management Agency</li> </ul> </li> <li>• Academia</li> <li>• Local/Regional Agencies</li> </ul>

13

## STAKEHOLDERS PURPOSE:

- Review plan and make recommendations
- Review mitigation actions and make sure actions are included to meet your needs

1/26/2023

14



## BENEFITS OF PARTICIPATING IN A MULTI-JURISDICTIONAL PLAN

- Enables comprehensive approach to mitigate hazards that affect multiple jurisdictions;
- Shares costs and resources;
- Avoids duplication of efforts;
- Improves coordination/communication among local jurisdictions; and
- Imposes external framework/schedule on process.

15



## REQUIREMENTS FOR EACH PARTICIPATING JURISDICTION

- Designate a representative to serve on the Hazard Mitigation Planning Committee;
- Provide data for and assist in the development of the updated risk assessment that describes how various hazards impact your jurisdiction;
- Provide data to describe current capabilities;
- Develop/update mitigation actions (at least one) specific to your jurisdiction;
- Provide comments on plan drafts as requested;
- Inform the public, local officials, and other interested parties about the planning process and provide opportunities for them to comment on the plan; and
- Formally adopt the mitigation plan.

16





## WHAT HAPPENS IF MY JURISDICTION CHOOSES NOT TO PARTICIPATE IN THE PLAN?

Jurisdictions (including public school districts) that have not participated in a FEMA-approved mitigation plan **will not be eligible applicants** for FEMA Hazard Mitigation Assistance grants.

17



## PUBLIC INVOLVEMENT REQUIREMENTS TASK 3: CREATING AN OUTREACH STRATEGY

- 1. During Drafting Stage
  - Ideas to inform the public
    - Public Survey
    - Hard Copies—City Halls/Libraries/Post Offices?
    - Link on County Website/Other Websites?
    - Article in the newspaper
- 2. Prior to approval
  - Draft Available via County Website
  - Hard Copies—at least two public locations
- Other Ideas/Events to Inform the Public?

18



## DATA COLLECTION QUESTIONNAIRES

TASK 4: REVIEWING COMMUNITY CAPABILITIES  
TASK 5: CONDUCT RISK ASSESSMENT

- Separate forms for local govts. and schools
- Look through Data Collection Guide
  - Capability Assessment Section
    - Existing Plans/Policies/Ordinances
    - Administrative/Technical Capabilities
    - Fiscal Resources
  - Additional Questions
  - Historic Hazard Events

19



## DATA COLLECTION QUESTIONNAIRES




Complete what you can



30 Minutes to complete questionnaire

20




## HAZARD IDENTIFICATION AND RISK ASSESSMENT

- Hazard Profile
  - Hazard Description
  - Geographic Location
  - Severity/Magnitude/Extent
  - Previous Occurrences
  - Probability of Future Occurrence
- Vulnerability Assessment
  - Vulnerability Overview
  - Potential Losses to Existing Development
  - Future Development
  - Hazard Summary by Jurisdiction
- Problem Statement

Based on existing plan, additional information from planning committee, additional research/analysis

21



## NATURAL HAZARDS FOR CONSIDERATION

- Natural Flood-Related Hazards
  - Flooding
  - Levee Failure
  - Dam Failure
- Natural Geologic Hazards
  - Earthquake
  - Land Subsidence / Sinkholes
- Natural Meteorological Hazards
  - Drought
  - Extreme Temperature
  - Severe Thunderstorms
  - Severe Winter Weather
  - Tornadoes
- Natural Other Hazard
  - Wildfire
  - Pandemic

22



## FLOODING (MAJOR AND FLASH)

- Primary Flooding Sources
- Previous Events from NCDC (National Climatic Data Center)
- USDA Risk Management Agency Crop Insurance Payments
- Presidential Declarations
- FEMA Average Annual Loss Study

23



## LEVEE FAILURE

- Locations of Levees in Planning Area
  - Accredited levees
  - Non-accredited levees protecting populations
  - Agricultural Levees
- Previous Events

24



## DAM FAILURE

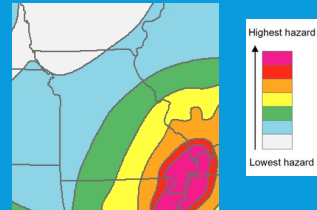
- Dams
  - State Regulated by Class
  - Federal by Class
  - Unregulated by Class
- Previous Events?

25



## EARTHQUAKE

- EQ Risk\ USGS Maps, etc.
- Previous Events in planning area



26



## LAND SUBSIDENCE/SINKHOLES

- Known Sinkhole Areas
  - Mines
  - Karst
- Previous Events

27



## DROUGHT

- Typical Impacts
- National Drought Mitigation Center Drought Impact Reporter Impacts
- Previous Events from USDA Risk Management Agency's insured crop damages from drought

28



## EXTREME TEMPERATURES

- Previous Events
  - NWS Advisories/Watches/Warnings for Heat/Excessive Heat or Cold/Wind Chill
  - NCEI (National Centers for Environmental Information)
  - Any injuries/fatalities?
  - USDA Risk Management Agency Crop Losses

29



## SEVERE THUNDERSTORMS

- Presidential Declarations including severe storms
- Previous Events
  - NCEI NWS Watches/Warnings
  - USDA Risk Management Agency Crop Insurance Payments



30



## SEVERE WINTER WEATHER

- Presidential Declarations including winter weather
- Previous Events
  - NCEI
  - NWS Watches/Warnings

31



## TORNADO

- Presidential Declarations including tornadoes
- Previous Events
  - NCEI
  - NWS Watches/Warnings

32




## WILDFIRE

- Previous Events from National Fire Incident Reporting System (if available)
- Wildland Urban Interface/Intermix from SILVIS maps



33




## PANDEMIC

- Center for Disease Control
  - Previous and ongoing events
  - History of pandemics
- Vulnerability Rating map of the United States (ArcGIS)

1/26/2023


34



## CRITICAL FACILITIES

- Critical Facility—essential in providing utility or direction either during the response to an emergency or during the recovery operation.
  - Essential Facility—if damaged would have devastating impacts on disaster response and/or recovery.
  - High Potential Loss Facility—if damaged would have a high loss or impact on the community.
  - Transportation/Lifeline Facility—assets critical for transport and provision of necessary utilities

35



## CRITICAL FACILITY EXAMPLES

Essential Facilities	High Potential Loss Facilities	Transportation and Lifeline
<ul style="list-style-type: none"> <li>• Hospitals and other medical facilities</li> <li>• Police stations</li> <li>• Fire station</li> <li>• Emergency Operations Centers</li> </ul>	<ul style="list-style-type: none"> <li>• Power plants</li> <li>• Dams/levees</li> <li>• Military installations</li> <li>• Hazardous material sites</li> <li>• Schools</li> <li>• Shelters</li> <li>• Day care centers</li> <li>• Nursing homes</li> <li>• Main government buildings</li> </ul>	<ul style="list-style-type: none"> <li>• Highways, bridges, and tunnels</li> <li>• Railroads and facilities</li> <li>• Bus facilities</li> <li>• Airports</li> <li>• Water treatment facilities</li> <li>• Natural gas facilities and pipelines</li> <li>• Oil facilities and pipelines</li> <li>• Communications facilities</li> </ul>

36



## ANALYSIS OF CRITICAL FACILITIES

- Impacts of some hazards will be considered for critical facilities
  - Ex. River Flood—critical facilities in floodplain
- Complete Critical Facility worksheet

37



## 9 TASKS TO COMPLETE THE PLAN UPDATE

- Task 1: Determine the Planning Area and Resources
- Task 2: Build the Planning Team
- Task 3: Create an Outreach Strategy
- Task 4: Review Community Capabilities
- Task 5: Conduct a Risk Assessment
- Task 6: Develop a Mitigation Strategy
- Task 7: Review and Adopt the Plan
- Task 8: Keep the Plan Current
- Task 9: Create a Safe and Resilient Community

38



## PLAN UPDATE FORMAT

- Executive Summary
- Chapter 1—Planning Process
- Chapter 2—Jurisdiction Profiles
- Chapter 3—Risk Assessment
- Chapter 4—Mitigation Strategy
- Chapter 5—Plan Maintenance
- Appendices

39



## CHAPTER 3 INCLUDES THE FOLLOWING FOR EACH HAZARD

- Hazard Profile
  - Hazard Description
  - Geographic Location
  - Severity/Magnitude/Extent
  - Previous Occurrences
  - Probability of Future Occurrence
  - Changing Future Conditions Considerations
- Vulnerability Assessment
  - Vulnerability Overview
  - Potential Losses to Existing Development
  - Future Development
  - Hazard Summary by Jurisdiction
- Problem Statement


40



## SAMPLE RISK ASSESSMENT RESULTS

Hazard	Risk Rating
Flooding	Low-Medium
Levee Failure	Very Low
Dam Failure	Low
Earthquakes	Very Low
Land Subsidence/Sinkholes	Low
Drought	Medium High
Extreme Heat	Medium
Extreme Cold	Medium Low
Severe Thunderstorms	Low-Medium
Severe Winter Weather	Low-Medium
Tornadoes	Low
Wildfire	Low

41



## FLOODING (RIVERINE AND FLASH)

Riverine flooding is most likely to occur in SFHAs. FEMA has not mapped the unincorporated area of Shelby County and all jurisdictions in Shelby County with the exception of Shelbyna. Shelbyna has an effective FIRRM map. Table 3.15 shows Shelby County flood event history using a 20-year time frame for previous events.

**Table 3.15. Shelby County NCEI Flood Events by Location, 2001-2021**

Location	# of Events
Unincorporated County	4

Source: National Centers for Environmental Information, 1/20/2022


Flash flooding occurs in SFHAs and those locations in the planning area that are low-lying. They also occur in areas without adequate drainage to carry away the amount of water that falls during intense rainfall events. NCEI data was used to determine which jurisdictions are most prone to flash flooding during the 20-year time period. Table 3.16 shows the number of flash flood events by location recorded in NCEI for the 20-year period.

**Table 3.16. Shelby County NCEI Flash Flood Events by Location, 2001-2021**

Location	# of Events
Unincorporated County	16
Unincorporated County (unspecified)	4 flood events
Unincorporated County (Cherry, Box)	5 flood events
Unincorporated County (Mason)	5 flood events
Unincorporated County (Bigsbee)	1 flood events
Unincorporated County (Maggie, Grove)	1 flood events
Shelbyna	1
Bethel	2
Hamden	1

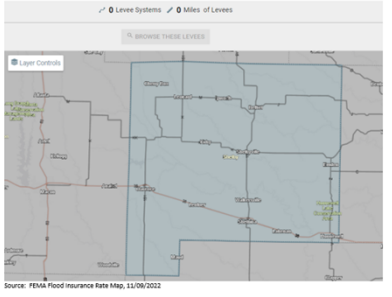
Source: National Centers for Environmental Information, 1/20/2022

42




## LEVEE FAILURE

**Figure 3.3. County Levees Shown on DFIRM as Providing Protection from the 1-Percent Annual Chance Flood**



Source: FEMA Flood Insurance Rate Map, 11/09/2022

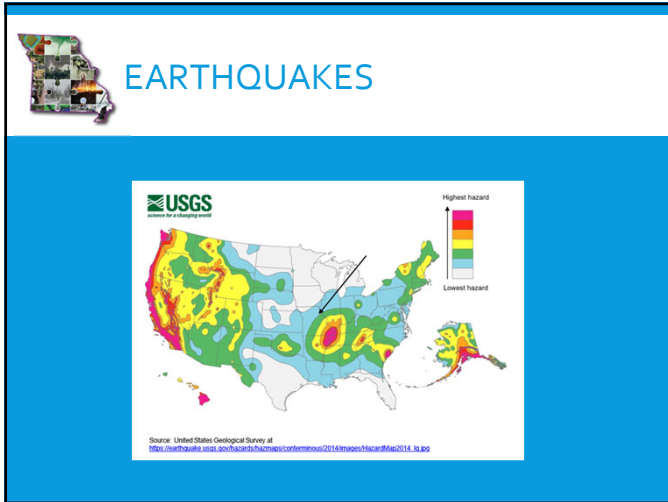
43



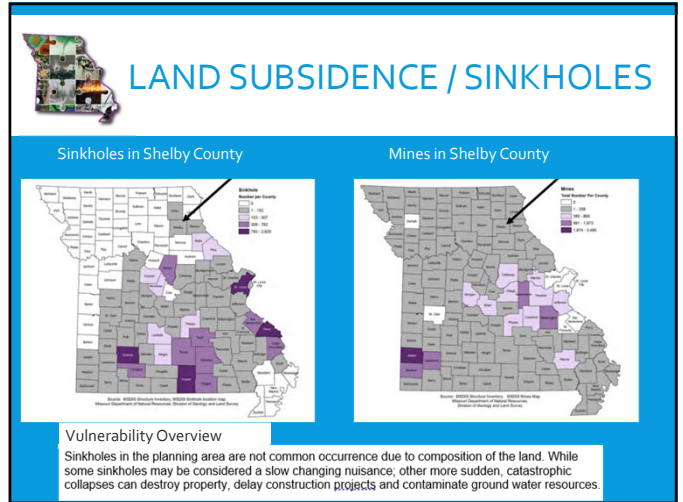
## DAM FAILURE

Vulnerability to dam failure is limited to two locations in Shelby County, primarily in the inundation area of the Shelbyville Lake Dam. Shelbyville Lake Dam is located on the west side of Shelbyville and would affect a small portion of the community and would cause minimal damage. The dam at the Shelbyna Lake would cause very minimal damage however the lake provides water to the Shelbyna Community and would have an effect on the community. The additional dams located in Shelby County are in the rural part of the county and would have very minimal if any impact during a dam breach.

44



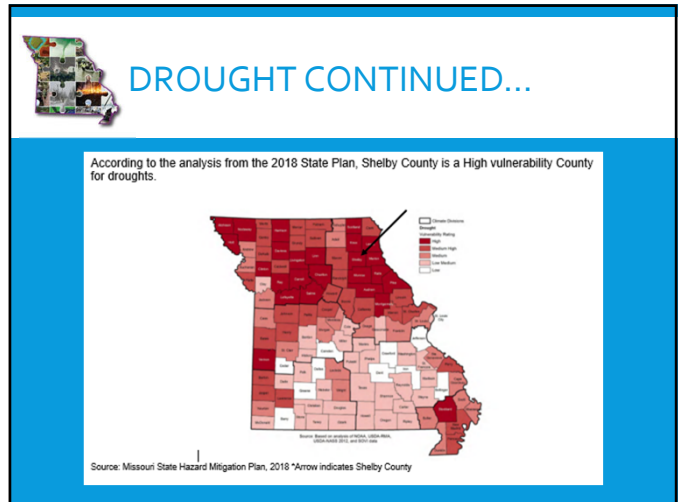
45



46

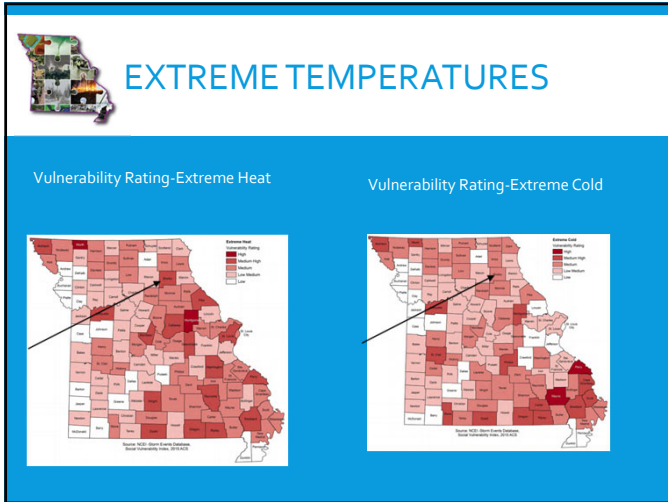


47

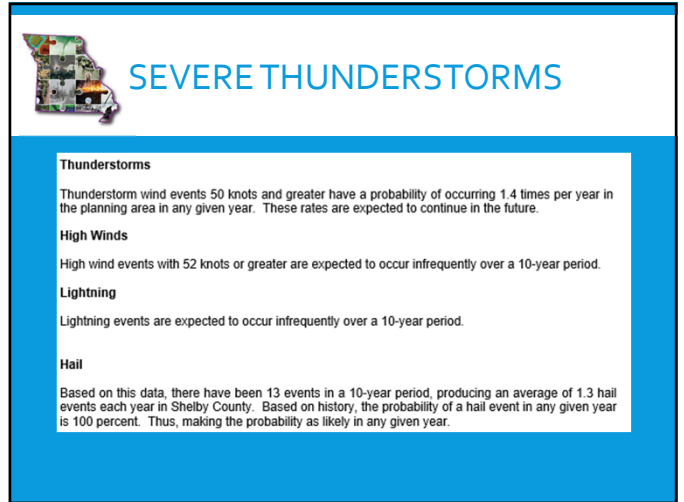


48

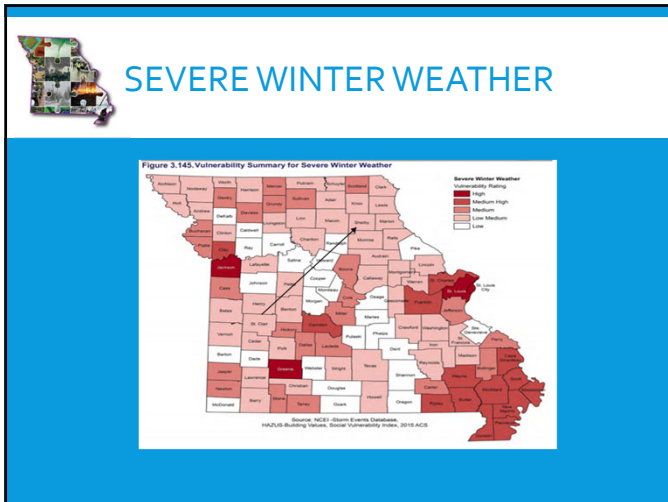




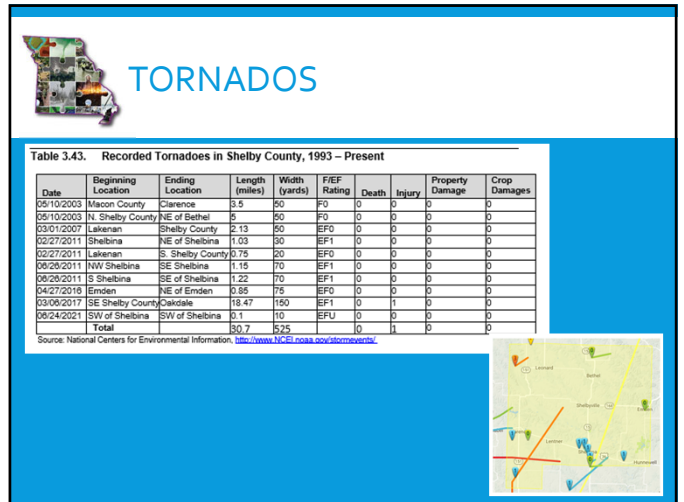
49



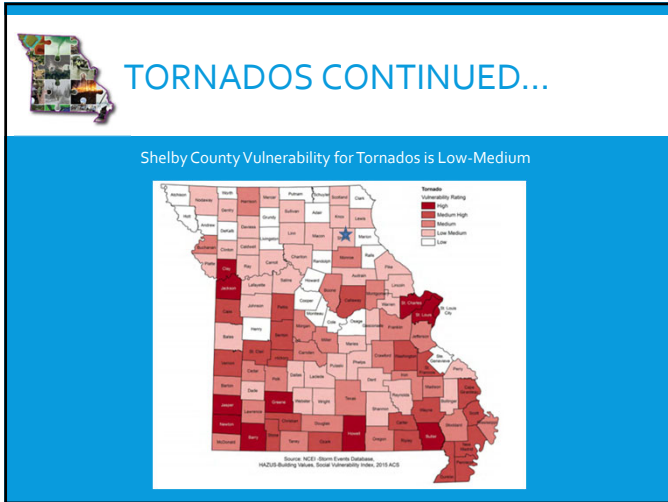
50



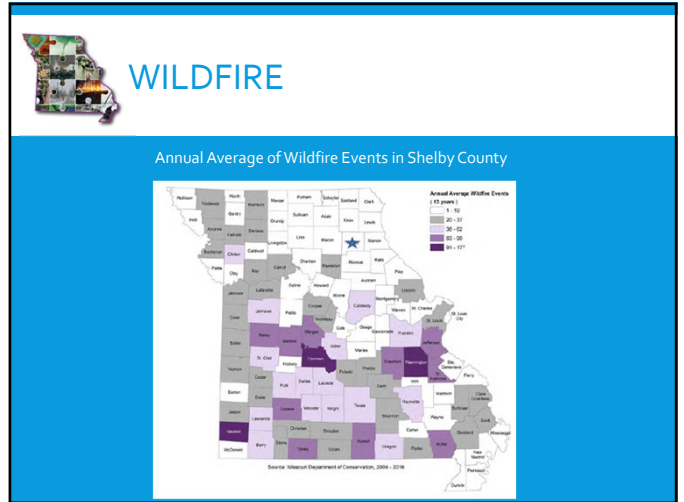
51



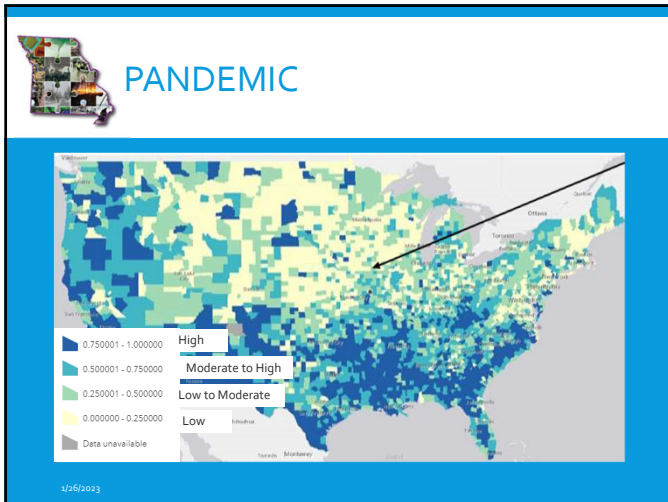
52



53



54



55

## SECTIONS TO ADDRESS:

**Table 3.11. Major Non-Government Employers in Shelby County**

Employer Name	Main Locations	Product or Service	Employees

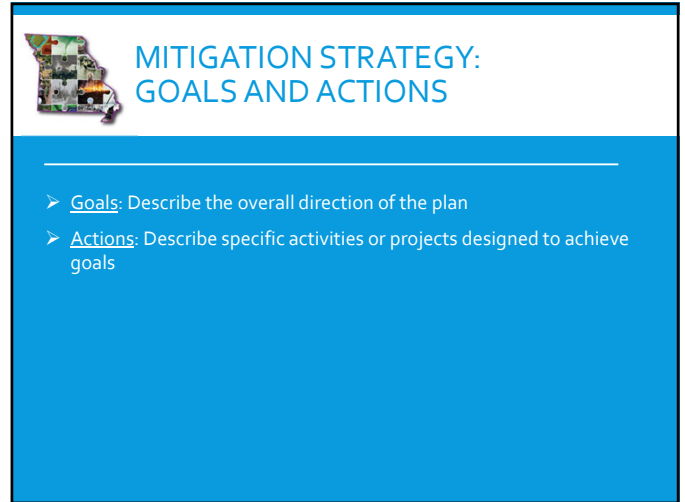
Source: Data Collection Questionnaires; local Economic Development Commissions

1/26/2023

56



57



58



59




60



## STATE GOALS 2018 MISSOURI STATE HAZARD MITIGATION PLAN

- Goal 1: Implement mitigation actions that improve the protection of human life, health, and safety from the adverse effects of disasters
- Goal 2: Implement mitigation actions that improve the continuity of government and essential services from the adverse effects of disasters
- Goal 3: Implement mitigation actions that improve the protection of public and private property from the adverse effects of disasters
- Goal 4: Implement mitigation actions that improve the protection of community tranquility from the adverse effects of disasters

61



## SHELBY COUNTY 2018 PLAN GOALS (REVIEW/REVISE)

Goal 1: Public Awareness- Using a variety of communications avenues to increase the citizens awareness of and promote education about the natural hazards that they may face, their vulnerability to these hazards, and how to lessen the effect of future natural hazards.

Goal 2: Strengthen communication and coordination between local governments, emergency personnel, public agencies, and citizens to mitigate the effect of future natural hazards.

Goal 3: Investigate, implement, maintain, and enforce mitigation policies and programs that limit the impact of natural hazards; on the loss of life; on new and existing properties; on natural resources; on infrastructure; and on the local economy.

62



## GROUP DISCUSSIONS

- Review goal statements (handout)
- Remember
  - Goals should be broad
  - Mitigation vs. Preparedness/Response
- Report to group with suggested revisions
  - Combine
  - Remove
  - Re-word
  - Add new

63



## UPDATE MITIGATION ACTIONS

64



## MITIGATION ACTIONS

**S**pecific  
**M**easurable  
**A**chievable  
**R**elevant  
**T**ime-bound


- See Handout
- Update actions that apply to your jurisdiction
  - Completed – provide date completed and funding amount if applicable
  - KEEP Not Started – provide details on any plans made to initiate action
  - KEEP In-Progress – provide details on progress made to-date
  - KEEP Modify – provide details on changes/updates to the action
  - Delete – provide reason for deleting
- Discuss with other representatives from your jurisdiction.
- Be careful to distinguish between response actions (actions after event) and mitigation actions (actions before an event that reduce or eliminate need for response)
- Actions should be SMART: specific, measurable, achievable, relevant, time bound

65



## UPDATING THE MITIGATION STRATEGY


66



## MITIGATION ACTIONS

- Losses from hazards can be reduced if communities take action before the next disaster
- Actions have long term and cumulative benefits
- Some may be low-cost initiatives readily adopted
- Others may be dependent on available funding or best implemented following a disaster
- Relevant to your Jurisdiction
- Focus on Mitigation- Not a response plan
- Not all actions identified through this planning process will be eligible for FEMA grants

67




## UPDATING/DEVELOPING MITIGATION ACTIONS

- Previous Actions—status updates required for ALL actions from previous plan (FEMA will not approve without this)
- New Actions—add new actions, as appropriate
  - FEMA's Mitigation Ideas Booklet
  - Review Problem Statements from Risk Assessment
  - State Priorities for Hazard Mitigation Assistance Grants
  - Public Opinion from Surveys

**S**pecific  
**M**easurable  
**A**chievable  
**R**elevant  
**T**ime-bound


68



## MITIGATION ACTIONS

- Each jurisdiction must have AT LEAST one action.
- Communities that participate in NFIP must have an ADDITIONAL action that relates to continued compliance.
- Complete action worksheets

69




## EXAMPLE MITIGATION ACTIONS

- Action- Bridge replacement on Road 123
- Action- Install/upgrade warning sirens
- Action- Low water crossing on Road 321
- Action- Enhancement/installation of floodwalls, dams, levees at XYZ
- Action- Safe room/storm shelter
- Action- Install/upgrade generators at critical facilities

\*Think flood mitigation, transportation infrastructure, etc.\*

70




## MITIGATION ACTION PLANS

- Complete for Continuing and New actions
- Provides details for each action


Action Worksheet	
Year of Action/Action	
Risk / Vulnerability	
Beneficial Address	
Problem being Mitigated	
Action or Project	
Applicable Code Reference	
Action/Project Number	
Year of Action or Project	
Mitigation Category	
Action or Project Description	
Estimated Cost	
Benefit	
Plan for Implementation	
Responsible Organization/Department	
Action/Project Priority	
Timeline for Completion	
Potential Flood Source	
Local Planning/Map Sources or be Used in Implementation, if any	
Progress Report	
Action Status	
Report of Progress	

71



## PROBLEM STATEMENTS FROM RISK ASSESSMENT / PREVIOUS ACTIONS

- -Plan Hazards
- -Dam Failure
- -Drought
- -Earthquakes
- -Extreme Heat
- -Fires
- -Flooding
- -Land Subsidence
- -Levee Failure
- -Thunderstorm/High Winds/Lightning/Hail
- -Tornado
- -Winter Weather/Snow/Ice/ Severe Cold



Any gaps between problems identified in risk assessment and actions addressed for your jurisdiction?

72



## FLOODING PROBLEM STATEMENTS

- **Problem Statement**
- Flooding or flash flooding affects the rural areas of Shelby County. Possible solutions are to increase the education to residents, promote the use of social media or texting and work with officials to identify flood prone areas.

1/26/2023

73



## LEVEE FAILURE PROBLEM STATEMENTS

- **Problem Statement**
- Low-head agricultural levees are not regulated or inspected on a regular basis.
- Residents need to be informed on how to perform inspections on low-head agricultural levees.

74



## DAM FAILURE PROBLEM STATEMENTS

- **Problem Statement**
- Jurisdictions within Shelby County that have control of dams do not properly inspect the dam to ensure the safety of the dam from failing. Jurisdictions and residents need to be informed of the proper way to inspect a dam and look for initial problems.

75



## EARTHQUAKES PROBLEM STATEMENTS

- Although Shelby County is not located in an area that will likely see catastrophic damage from an earthquake, the County will be impacted by the loss of communications, transportation, the disruption of roads, rail and pipelines, water transportation, and the area will see a significant amount of refugees fleeing from Southern Missouri if a quake hits that area. Education is minimal for earthquakes due to the low likely hood of impact. Bethel, Shelbina and Shelbyville consist of a few older tall buildings that are not able to withstand an earthquake event. There is one Emergency Management Director for the County that knows where all the generators and emergency buildings are. Not all citizens utilize social media and texting.
- An emergency plan for earthquakes needs to be made available to all residents and stated what would happen in the event of an earthquake with details for communications and transportation. Downtown building owners need to know plan in case damage is done to their building. Residents need to be made aware of where the generators and emergency buildings are located. Utilization of social media and texting needs to be encouraged.

76



## LAND SUBSIDENCE/SINKHOLES PROBLEM STATEMENTS

### • Problem Statement

- Sinkholes can occur at any time and without warning and vary by size. There can be a disruption of transportation services and not residents in the dangerous areas are not educated on what to do if a sinkhole occurs.
- Education needs to occur on the danger areas of a sinkhole occurring and what to do if a sinkhole does occur.

77



## DROUGHT PROBLEM STATEMENTS

### • Problem Statement

- Shelby County residents are not informed on water conservation, not all citizens comply with water usage warnings when issued, water us is greatly affected, businesses and residents have continual problems with water shortages.

Water conservation needs to occur to ensure all citizens comply with water shortage warnings and plans need to be established for businesses and residents on how to survive a drought.

78



## EXTREME TEMPERATURE'S PROBLEM STATEMENTS

### • Problem Statement

- Not everyone in Shelby County utilizes social media and texting, elderly and young children are most vulnerable to a heat wave. Cooling locations in the County need to be identified and open to everyone for extended hours.

79



## THUNDERSTORM/HIGH WINDS/ LIGHTNING/HAIL PROBLEM STATEMENTS

### • Problem Statement

- Thunderstorms can damage power lines with the high winds or fallen debris such as tree limbs. Not everyone in the county utilizes social media, texting or has access to a weather radio, smaller communities do not have warning sirens, and rural areas do not have warning sirens.

- Possible solutions could be the installation of warning sirens in smaller communities or campgrounds, rural citizens are educated on how to utilize social media and texting, and weather radios are accessed by residents more than what is currently being used.

80





## WINTER WEATHER/SNOW/ICE/ SEVERE COLD PROBLEM STATEMENTS

### • Problem Statement

- Shelby County does not have adequate shelters for residents in the event of a winter storm that is easily accessible with roads that can become hazardous for motorists and emergency responders, power lines can break from ice accumulation and not everyone utilizes social media or texting.
- Education needs to occur to ensure all residents are aware of the shelters in the County, residents are educated on emergency supplies to have and the utilization of social media and texting increases.

81



## TORNADO PROBLEM STATEMENTS

### • Problem Statement

- Shelby County has inadequate tornado shelters throughout the county, not everyone utilizes social media and/or texting, the rural areas do not have warning sirens, smaller communities do not have warning sirens, lack of awareness for available shelters and more education needs to occur.
- Possible solutions could be awareness made of existing tornado shelters, education on what to do in the event of a tornado and smaller communities could install warning sirens. A strong emphasis could be made for everyone in the county to own a weather radio.

82



## WILDFIRE PROBLEM STATEMENTS

### • Problem Statement

- Residents do not comply with burn bans, education is not available for the levels of burn bans, many residents lack education in fire safety and not all residents utilize social media and texting.
- Education needs to occur on the dangers associated with not complying with the burn bans, more education for fire safety and encourage utilization of social media and texting.

83




## PANDEMIC PROBLEM STATEMENTS

### • Problem Statement

- In order to keep transmission rates low during a pandemic outbreak, residents need to safely distance themselves as best as possible and follow the numerous Center for Disease Control guidelines. Due to the lack of accessibility to ongoing public health information and broadband connectivity, it is especially challenging to inform residents about current and upcoming pandemic updates. It is an issue in rural America to convey the severity of pandemic outbreaks and provide preparedness instruction because social media, website posts, podcasts, etc. are not an option for every resident in the planning area.

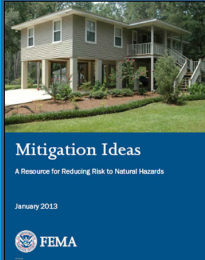
1/26/2023

84




## ADDITIONAL RESOURCES

- FEMA's Mitigation Ideas Booklet
- Can be downloaded at:  
<https://www.fema.gov/media-library/assets/documents/30627?id=6938>



85



## RESOLUTION

**Model Resolution**

(LOCAL GOVERNING BODY/SCHOOL DISTRICT), Massachusetts RESOLUTION NO. \_\_\_\_\_

**A RESOLUTION OF THE (LOCAL GOVERNING BODY/SCHOOL DISTRICT) ADOPTING THE (PLAN NAME).**

WHEREAS the (local governing body/school district) recognizes the threat that natural hazards pose to people and property within the (local governing body/school district); and

WHEREAS the (local governing body/school district) has participated in the preparation of a multi-jurisdictional local hazard mitigation plan, (name known as the (plan name)), hereafter referred to as the Plan, in accordance with the Disaster Mitigation Act of 2002; and

WHEREAS the Plan identifies mitigation goals and actions to reduce or eliminate long-term risk to people and property in the (local governing body/school district) from the impacts of future hazards and disasters; and

WHEREAS the (local governing body) recognizes that land use policies have an impact on whether people and property are exposed to natural hazards, the (local governing body/school district) endorses to integrate the Plan into the comprehensive planning process; and

WHEREAS adopted by the (local governing body/school district) demonstrate their commitment to hazard mitigation and achieving the goals outlined in the Plan;

**NOW THEREFORE, BE IT RESOLVED BY THE (LOCAL GOVERNMENT/SCHOOL DISTRICT), in the State of Massachusetts, THAT**

in accordance with (local rule for adopting resolutions), the (local governing body/school district) adopts the final FEMA-approved Plan:


ADOPTED by a vote of \_\_\_\_\_ in favor and \_\_\_\_\_ against, and \_\_\_\_\_ abstaining, this \_\_\_\_\_ day of \_\_\_\_\_.

By (Sig) \_\_\_\_\_  
 PWT name: \_\_\_\_\_

ATTEST:  
 By (Sig) \_\_\_\_\_  
 PWT name: \_\_\_\_\_


APPROVED AS TO FORM:  
 By (Sig) \_\_\_\_\_  
 PWT name: \_\_\_\_\_

86



## PLAN MAINTENANCE

87



## PLAN MAINTENANCE

- FEMA Regulations require complete plan update every 5 years.
- FEMA requires a formal plan maintenance process to ensure that the mitigation plan remains an active and relevant document
- Who, how, and when will plan be monitored, evaluated, and updated?
- How will public be involved in plan maintenance process?
- How will mitigation strategy be incorporated into other planning mechanisms?

88



## PLAN IMPLEMENTATION AND MAINTENANCE-HMPC CONSENSUS NEEDED

- Who, how, and when will plan be monitored, evaluated, and updated?
  - Annual Review?, After hazard events?
  - Who will organize?, Who will participate?
  - Update Status of Mitigation Actions?
- How will public be involved in plan maintenance process?
  - Press Release on annual reviews?
  - Other ideas?

89



## PLAN IMPLEMENTATION AND MAINTENANCE-HMPC CONSENSUS NEEDED

- How will mitigation strategy be incorporated into other planning mechanisms?
  - Review Mitigation Plan during planning process to update other plans?
    - Comprehensive Plans
    - Capital Improvement Plans
    - School Infrastructure Plans
    - School Emergency Plans
  - After review of Mitigation Plan, forward strategy with updates for consideration in other planning mechanisms?

90



## HAZARD MITIGATION ASSISTANCE (HMA) GRANTS: MISSOURI STATE EMERGENCY MANAGEMENT AGENCY

- Hazard Mitigation Grant Program-HMGP
- Building Resilient Infrastructure & Communities-BRIC
- Flood Mitigation Assistance Grants-FMA

### Contact

Heidi Carver

State Hazard Mitigation Officer

573-526-9116


91



## OTHER FUNDING SOURCES


- USDA
  - Rural Development Grants
  - Emergency Watershed Protection Program
- U.S. Dept of Commerce
  - Public Works and Economic Dev. Facilities Assistance
- U.S. Dept of Housing and Urban Development
  - Community Development Block Grants
- U.S. Army Corps of Engineers
  - Studies
  - Projects

92



## PUBLIC COMMENT PERIOD


93



## COMMENT PERIODS-FULL PLAN DRAFT

- February 1-15, 2023 Committee and Public Comment Period
  - 2 week period
  - [www.marktwaincog.com](http://www.marktwaincog.com)
  - Shelby County Courthouse
  - Shelby County Herald

94



## NEXT STEPS

- February 2023-Submit Plan to SEMA
- After receiving SEMA Approval-Submit Plan to FEMA

95

# Multi-Jurisdictional Hazard Mitigation Plan

## Data Collection Questionnaire

### For Local Governments

County: Shelby

Jurisdiction: Shelby County Commission

Return by: \_\_\_\_\_

Please complete this data collection questionnaire as accurately and completely as possible as this information will appear in the mitigation plan. A data collection questionnaire must be completed for each "jurisdiction" that wishes to be included in the plan. According to FEMA's definition a jurisdiction is any local government, including counties, municipalities, cities, towns, school districts, special districts, councils of government, and tribal organizations. Any of these entities as well as publicly funded colleges and universities that do not participate in the planning process **will not** be eligible applicants for FEMA mitigation funding programs. Please note: School Districts and other Educational Institutions should complete the Data Collection Questionnaire indicated "For School Districts and Educational Institutions".

Prepared by: Glewn Eggar

Phone: 573-819-43120

Email: geagar@centurytel.net

Date: 11-14-22

**Please return questionnaires by mail, email, or fax to:**

Name: \_\_\_\_\_

Address: \_\_\_\_\_

Email: \_\_\_\_\_

Fax: \_\_\_\_\_

# CAPABILITY ASSESSMENT & INCORPORATION OF EXISTING PLANS, STUDIES, REPORTS AND TECHNICAL INFORMATION

The purpose of this section is to collect information to document existing capabilities as well as determine existing plans, studies, reports, and technical information that may need to be incorporated in the mitigation plan. Although some of this information may have been captured in your previous mitigation plan, it is important to ensure this information is current in the plan update

Please indicate which of the following your jurisdiction has in place. For elements that do not pertain to your type of public entity, please indicate with "N/A". If applicable, please provide a completion date for the element. If your jurisdiction does not have a particular element, and a higher level of government has the authority pertaining to your jurisdiction, please indicate this in the comments column. If your jurisdiction has any of the **underlined and bolded** elements, please provide a copy of the document to the contact listed on the front and indicate method in the comments column (i.e. available on the web, will email or mail).

Element	Yes, No, N/A	Comments and/or Weblink
<b>Planning Capabilities</b>		
<b><u>Comprehensive Plan</u></b>	Date: No	
Builder's Plan	Date: No	
Capital Improvement Plan	Date: No	
City Emergency Operations Plan	Date: NA	
County Emergency Operations Plan	Date: ON Going	
Local Recovery Plan	Date: NO	
County Recovery Plan	Date: NO	
City Mitigation Plan	Date: NA	
County Mitigation Plan	Date: ON Going	
Debris Management Plan	Date: NO	
<b><u>Economic Development Plan</u></b>	Date: ON Going	
Transportation Plan	Date: NO	
Land-use Plan	Date: NO	
Flood Mitigation Assistance (FMA) Plan	Date: ON Going	
<b><u>Watershed Plan</u></b>	Date: YES	
Firewise or other fire mitigation plan	Date: NO	
Critical Facilities Plan (Mitigation/Response/Recovery)	Date: NO	

Element	Yes, No, N/A	Comments and/or Weblink
<b>Policies/Ordinance</b>		
Zoning Ordinance	No	
Building Code	Version: No	
Floodplain Ordinance	Date: No	
Subdivision Ordinance	No	
Tree Trimming Ordinance	No	
Nuisance Ordinance	No	
Stormwater Ordinance	No	
Drainage Ordinance	No	
Site Plan Review Requirements	No	
Historic Preservation Ordinance	No	
Landscape Ordinance	No	
<b>Program</b>		
Zoning/Land Use Restrictions	No	
Codes Building Site/Design	No	
Hazard Awareness Program	No	
National Flood Insurance Program (NFIP)	on going <sup>Not County</sup>	wide but Cities have it
NFIP Community Rating System (CRS) program	No	If so, what is your current level rating?
National Weather Service (NWS) Storm Ready Certification	No	
Firewise Community Certification	No	
Building Code Effectiveness Grading (BCEGs)	No	
ISO Fire Rating	Rating: NA	
Economic Development Program	Yes	
Land Use Program	No	
Public Education/Awareness	No	
Property Acquisition	No	
Planning/Zoning Boards	No	
Stream Maintenance Program	No	
Tree Trimming Program	No	
<b>Engineering Studies for Streams (Local/County/Regional)</b>	No	

Element	Yes, No, N/A	Comments and/or Weblink
Mutual Aid Agreements		
<b>Studies/Reports/Maps</b>		
<u>Hazard Analysis/Risk Assessment (City)</u>	N/A	
<u>Hazard Analysis/Risk Assessment (County)</u>	No	
Evacuation Route Map	No	
<u>Critical Facilities Inventory</u>	yes	
<u>Vulnerable Population Inventory</u>	yes	
<u>Land Use Map</u>	yes	
<b>Staff/Department</b>		<b>Full Time or Part Time?</b>
Building Code Official	No	
Building Inspector	No	
Mapping Specialist (GIS)	yes	
Engineer	No	
Development Planner	No	
Public Works Official	No	
Emergency Management Coordinator	yes	
NFIP Floodplain Administrator	No	
Emergency Response Team	yes	
Hazardous Materials Expert	No	
Local Emergency Planning Committee	yes	
County Emergency Management Commission	No	
Sanitation Department	No	
Transportation Department	No	
Economic Development Department	yes	
Housing Department	No	
Historic Preservation	yes	Historical Society
<b>Non-Governmental Organizations (NGOs)</b>	<b>Is there a local chapter? Yes or No</b>	
American Red Cross	Yes	Local - Hannibal
Salvation Army	yes	Local Hannibal
Veterans Groups	yes	American Legion



Element	Yes, No, N/A	Comments and/or Weblink
Local Environmental Organization	NO	
Homeowner Associations	NO	
Neighborhood Associations	NO	
Chamber of Commerce	Yes	
Community Organizations (Lions, Kiwanis, etc.)	NO	
Financial Resources		Is your jurisdiction able to? Yes or No
Apply for Community Development Block Grants		Yes
Fund projects thru Capital Improvements funding		NO
Authority to levy taxes for specific purposes		Yes
Fees for water, sewer, gas, or electric services		NO
Impact fees for new development		NO
Incur debt through general obligation bonds		Yes
Incur debt through special tax bonds		NO
Incur debt through private activities		NO
Withhold spending in hazard prone areas		NO

For plan updates, the plan maintenance process outlined in your previous plan requires all participating jurisdictions to incorporate the requirements of the mitigation plan into other planning mechanisms, when appropriate. A key element of effective implementation of mitigation is for the mitigation plan to be incorporated in existing authorities, policies, programs, and resources. Next to each applicable planning mechanism, indicate how your jurisdiction incorporated the previous mitigation plan. If no incorporation has occurred, please explain, including background information detailing any challenges preventing incorporation.

Planning Capabilities	Method of Incorporation Since Previous Plan or Challenges Preventing Incorporation
Comprehensive Plan	NA
Builder's Plan	NA
Capital Improvement Plan	NA
Local Recovery Plan	NA
County Recovery Plan	NA
Debris Management Plan	NA
Economic Development Plan	County wide board in place
Transportation Plan	NA
Land-use Plan	NA
Watershed Plan	worked with MTRC6 on Plan 2018
Firewise or other Fire Mitigation Plan such as Community Wildfire Protection Plan	NA

## Additional Questions

1. How is your government structure organized? (Commission, Mayor/City Council, how many members)

Commission (3)

2. List any past or ongoing public education or information programs, such as for responsible water use, fire safety, household preparedness, or environmental education.

NA

3. List any other past or ongoing projects or programs designed to reduce disaster losses, these may include projects to protect critical facilities. Be sure to include pending or approved projects submitted for FEMA mitigation grants.

NA

4. Describe any hazard-related concerns or issues regarding the vulnerability of special needs populations, such as the elderly, disabled, low-income, or migrant farm workers.

When we have flooding or large snow amounts, we may not be able to reach some of them.

5. How many outdoor warning sirens are in your community?

20

How are they activated (indicate responsible department/personnel)?

911 Dispatch

6. Does your community utilize any other warning systems such as Cable Override, Reverse 911, etc? If so, please describe.

No

7. Does your community have designated public tornado shelters/saferooms? If so, are they constructed in accordance with FEMA standards?

~~Yes~~ No

Yes

Please provide address locations:

Various

8. List residential, commercial and industrial development in your jurisdiction since last plan update.

We have 2 New Dollar General Stores  
Under Construction

9. Describe development trends and expected growth areas. Is any new development expected to occur in the 100-year floodplain? Is any new development expected to occur in any other known hazard areas? If possible, please provide a map indicating potential/planned growth areas.

No

10. Are any new facilities or infrastructure planned for construction during the next five years? If so, please provide facility name and purpose along with proposed locations, if known.

None

11. Please list major employers in your jurisdiction with an estimated number of employees.

Cerro Copper	150	South Shelby	85
North Shelby	50		
COGO Plant	20		

12. Please list Mitigation Planning Committee members who served during the development of the previously approved plan. Was the process set forth for monitoring the implementation of the previously approved mitigation plan adhered to? Did the Committee meet as was specified in the previously approved plan? Why or why not?

County Commissioner Mayors Emergency Personnel

13. Describe your jurisdiction's participation in the NFIP. Include information about how compliance with the NFIP is enforced locally.

This plan has been completed!

# VULNERABILITY ASSESSMENT

The purpose of this worksheet is to assess the vulnerable buildings, populations, critical facilities, infrastructure, and other important assets in your community by using the best available data to complete the table. Use the table on the next page to compile a detailed inventory of specific assets at risk including critical facilities and infrastructure; natural, cultural, and historical assets; and economic assets. In the natural hazard column of the asset inventory table, indicate (by assigned abbreviation) which of the following hazards the asset is vulnerable to:

Natural Hazards	
Flooding (Major & Flash) - <b>RF</b>	Drought - <b>D</b>
Levee Failure - <b>LF</b>	Extreme Temperature - <b>ET</b>
Dam Failure - <b>DF</b>	Severe Thunderstorm (incl. winds, hail, lightning) - <b>ST</b>
Earthquake - <b>EQ</b>	Severe Winter Weather (incl. snow, ice, severe cold) - <b>SWW</b>
Land Subsidence / Sinkholes - <b>LSS</b>	Tornadoes - <b>T</b>
Drought - <b>D</b>	Wildfire - <b>WF</b>

## Critical Facilities and Infrastructure

A critical facility may be defined as one that is essential in providing utility or direction either during the response to an emergency or during the recovery operation. FEMA's HAZUS-MH loss estimation software uses the following three categories of critical assets. 'Essential facilities' are those that if damaged would have devastating impacts on disaster response and/or recovery. 'High potential loss facilities' are those that would have a high loss or impact on the community. Transportation and lifeline facilities are third category of critical assets; examples are provided below.

### Essential Facilities

Hospitals and other medical facilities  
Police stations  
Fire station  
Emergency Operations Centers

### High Potential Loss Facilities

Power plants  
Dams/levees  
Military installations  
Hazardous material sites  
Schools  
Shelters  
Day care centers  
Nursing homes  
Main government buildings

### Transportation and Lifeline

Highways, bridges, and tunnels  
Railroads and facilities  
Bus facilities  
Airports  
Water treatment facilities  
Natural gas facilities and pipelines  
Oil facilities and pipelines  
Communications facilities

## Economic Assets

Economic assets at risk may include major employers or primary economic sectors, such as agriculture, whose losses or inoperability would have severe impacts on the community and its ability to recover from disaster.



Name of Asset	Address	Area (sq.ft.)	Replacement Value (Insured) (\$)	Contents Value (\$)	Occupancy/ Capacity (#)	Natural Hazards
Nothing New	Same as 5 yrs ago					
High Potential Loss Facilities such as power plants, dams/levees, military installations, hazardous materials sites, shelters, day care centers, nursing homes, main government buildings (Do not include schools—they will be reported by the school districts)						
Transportation and Lifelines such as highways, bridges, and tunnels; railroads and facilities, bus facilities, airports, water treatment facilities, natural gas facilities and pipelines, oil facilities, oil facilities and pipelines, communications facilities						
Same as 5 yrs ago						

\*If replacement cost data is not available, use the best available data (assessed valuation or other method for estimating cost) and explain any data deficiencies.

**Economic Assets (Major Employers, etc)**

<b>Asset</b>	<b>Address</b>	<b>Product/ Service</b>	<b>Value (if known)</b>	<b>Number of Employees</b>	<b>Hazards</b>



## HISTORIC HAZARD EVENTS

Please fill out the sheet on the next page for each significant hazard event that affected **Your Jurisdiction**. **Make as many copies as necessary to record all events** and complete with as much detail as possible. This includes all events associated with the hazards listed below that have caused previous damage in your jurisdiction. It is especially important to capture events that either were not included in the previous Hazard Mitigation Plan or occurred since the plan was completed. Attach supporting documentation, photocopies of newspaper articles, or other original sources.

<b>Jurisdiction</b>	
<b>Type of event</b>	Flooding
<b>Nature and magnitude of event</b>	7 inches rain in 12 hrs
<b>Location</b>	All of Shelby County
<b>Date of event</b>	2020
<b>Injuries</b>	- None
<b>Deaths</b>	None
<b>Property damage</b>	unknown
<b>Infrastructure damage</b>	\$250,000
<b>Crop damage</b>	unknown
<b>Business/economic impacts</b>	''
<b>Road/school/other closures</b>	None
<b>Other damage</b>	
<b>Insured losses</b>	
<b>Federal/state disaster relief funding</b>	\$250,000
<b>Source of information</b>	FEMA
<b>Comments</b>	

## HISTORIC HAZARD EVENTS (continued)

Please fill out the sheet on the next page for each significant hazard event that affected **Your Jurisdiction**. **Make as many copies as necessary to record all events** and complete with as much detail as possible. This includes all events associated with the hazards listed below that have caused previous damage in your jurisdiction. It is especially important to capture events that either were not included in the previous Hazard Mitigation Plan or occurred since the plan was completed. Attach supporting documentation, photocopies of newspaper articles, or other original sources.

<b>Jurisdiction</b>	
<b>Type of event</b>	
<b>Nature and magnitude of event</b>	
<b>Location</b>	
<b>Date of event</b>	
<b>Injuries</b>	
<b>Deaths</b>	
<b>Property damage</b>	
<b>Infrastructure damage</b>	
<b>Crop damage</b>	
<b>Business/economic impacts</b>	
<b>Road/school/other closures</b>	
<b>Other damage</b>	
<b>Insured losses</b>	
<b>Federal/state disaster relief funding</b>	
<b>Source of information</b>	
<b>Comments</b>	

## ASSESSMENT OF PREVIOUSLY PROPOSED ACTIONS

**Jurisdiction:** Shelby County Commission

The contractor/plan development facilitator has provided a list of actions proposed in the previously approved plan for each jurisdiction. Use the worksheet below to evaluate whether each action is still current, feasible, desirable, and/or creates benefit that outweighs the cost.

- The worksheet should include information on the status of the action and progress made in implementation, if any. This includes:
- For **completed actions** provide a description of the implementation process. This may be a success story you would like to publicize in your community.
  - Some of the actions might have been **ongoing** in nature, such public information and education programs. When this is the case, indicate what activity has occurred during the previous five years, and indicate if this program is still viable enough that it should be carried on into the future.
  - If **no progress** has been made in the implementation of a given action, discuss why. Note that implementation is not a requirement. However, if no progress has been made, perhaps this is an action that would be appropriate to delete in the updated plan.

During review of the previously approved actions, consider whether any new actions should be proposed. Perhaps damages from a recent hazard event have indicated the need for new approaches to protect property and life. Review the problem statements from the updated plan for ideas. Also review the FEMA publication *Mitigation Ideas: A Resource for Reducing Risk to Natural Hazards (January 2013)*.

#	Action	Status			Description of Implementation Activities or Reasons for Lack of Progress	Keep – ✓ Delete – X Modify – M
		Complete	Ongoing	No Progress		
	No change					



**Multi-Jurisdictional Hazard Mitigation Plan**  
**Data Collection Questionnaire**  
**For Small Local Governments**

County: Shelby

Jurisdiction: \_\_\_\_\_

Return by: \_\_\_\_\_

Please complete this data collection questionnaire as accurately and completely as possible as this information will appear in the mitigation plan. A data collection questionnaire must be completed for each "jurisdiction" that wishes to be included in the plan. According to FEMA's definition a jurisdiction is any local government, including counties, municipalities, cities, towns, school districts, special districts, councils of government, and tribal organizations. Any of these entities as well as publicly funded colleges and universities that do not participate in the planning process will not be eligible applicants for FEMA mitigation funding programs. Please note: School Districts and other Educational Institutions should complete the Data Collection Questionnaire indicated "For School Districts and Educational Institutions".

Prepared by: Theresa Malcarne (Village Clerk)

Phone: 660-346-0628

Email: vobclerk@marktwain.net

Date: December 7, 2022

**Please return questionnaires by mail, email, or fax to:**

Name: \_\_\_\_\_

Address: \_\_\_\_\_

Email: \_\_\_\_\_

Fax: \_\_\_\_\_

# CAPABILITY ASSESSMENT & INCORPORATION OF EXISTING PLANS, STUDIES, REPORTS AND TECHNICAL INFORMATION

The purpose of this section is to collect information to document existing capabilities as well as determine existing plans, studies, reports, and technical information that may need to be incorporated in the mitigation plan. Although some of this information may have been captured in your previous mitigation plan, it is important to ensure this information is current in the plan update

Please indicate which of the following your jurisdiction has in place. For elements that do not pertain to your type of public entity, please indicate with "N/A". If applicable, please provide a completion date for the element. If your jurisdiction does not have a particular element, and a higher level of government has the authority pertaining to your jurisdiction, please indicate this in the comments column. If your jurisdiction has any of the **underlined and bolded** elements, please provide a copy of the document to the contact listed on the front and indicate method in the comments column (i.e. available on the web, will email or mail).

Element	Yes, No, N/A	Comments and/or Weblink
<b>Planning Capabilities</b>		
Comprehensive or Land-Use Plan	<del>N/A</del> NO	Date:
Capital Improvement Plan	Generator/Lift Station	Date:
Transportation Plan / Highway Department	NO	Date:
Emergency Operations Plan	Yes Reg with County	Date:
Local Recovery Plan	Yes	Date:
Debris Management Plan	CTS Trash	Date:
Firewise or other fire mitigation plan	NO	Date:
Economic Development Plan	Through County	Date:
<b>Policies/Ordinance</b>		
Zoning Ordinance	Pending	
Building Code	Floodplan/Sewer	Version:
Floodplain Ordinance	Yes	Date:
Drainage/Stormwater Ordinance	Yes	
Site Plan Review Requirements	Floodplan Yes	
Historic Preservation Ordinance	? Yes	

Element	Yes, No, N/A	Comments and/or Weblink
<b>Program</b>		
National Flood Insurance Program (NFIP)	Yes	
NFIP Community Rating System (CRS) program	Yes	If so, what is your current level rating? ?
National Weather Service (NWS) Storm Ready Certification	?	
Firewise Community Certification	? (County)	
Building Code Effectiveness Grading (BCEGs)	?	
ISO Fire Rating	Rating: County	
Public Education or information programs (i.e., responsible water use, fire safety, household preparedness, or environmental education)	in office	
Mutual Aid Agreements	County involved	
<b>Studies/Reports/Maps</b>		
Critical Facilities Inventory	in office	
Vulnerable Population Inventory	Sm. in office	
<b>Staff/Department</b>		
		<b>Full Time or Part Time?</b>
Building Code Official / Building Inspector	flood	Part time
Engineer	<del>NA</del> NO	
Development Planner	<del>NA</del> NO	
NFIP Floodplain Administrator	Theresa Malcarne	Part time
Mapping Specialist (GIS)	<del>NA</del> NO	
Public Works Official	Jonah	On Call
Emergency Management Coordinator	John (check?)	3 On Call
Local Emergency Planning Committee	Trustees	Full
Sanitation Department	Jonah Klien	Part time
Highway/Transportation Department	NA	
Economic Development Department	NA	Shelby County
Housing Department	NA	
Historic Preservation	? Colony	Colony Board / Village ordinance

Element	Yes, No, N/A	Comments and/or Weblink
<b>Non-Governmental Organizations (NGOs)</b>	<b>Is there a local chapter? Yes or No</b>	
American Red Cross	No	
Salvation Army	No	
Veterans Groups	No	
Local Environmental Organization	No	
Homeowner Associations	No	
Neighborhood Associations	No	
Chamber of Commerce	No	
Community Organizations (Lions, Kiwanis, etc.)	No	
<b>Financial Resources</b>	<b>Is your jurisdiction able to? Yes or No</b>	
Apply for Community Development Block Grants	Yes	
Fund projects thru Capital Improvements funding	Yes	
Authority to levy taxes for specific purposes	Yes	
Fees for water, sewer, gas, or electric services	Yes (Sewer)	
Impact fees for new development	No	
Incur debt through general obligation bonds	No	
Incur debt through special tax bonds	No	
Incur debt through private activities	No	
Withhold spending in hazard prone areas	No	



**For plan updates, the plan maintenance process outlined in your previous plan requires all participating jurisdictions to incorporate the requirements of the mitigation plan into other planning mechanisms, when appropriate. A key element of effective implementation of mitigation is for the mitigation plan to be incorporated in existing authorities, policies, programs, and resources. Next to each applicable planning mechanism, indicate how your jurisdiction incorporated the previous mitigation plan. If no incorporation has occurred, please explain, including background information detailing any challenges preventing incorporation.**

Planning Capabilities	Method of Incorporation Since Previous Plan or Challenges Preventing Incorporation
Comprehensive or Land-Use Plan	
Capital Improvement Plan	
Transportation Plan / Highway Department	
Emergency Operations Plan	
Local Recovery Plan	
Debris Management Plan	
Firewise or other fire mitigation plan	
Economic Development Plan	

2  
⊗

## Additional Questions

1. How is your government structure organized? (Commission, Mayor/City Council, how many members)

5 Trustees / chairman app. through Trustees

@ April Board meeting

2. List any other past or ongoing projects or programs designed to reduce disaster losses, these may include projects to protect critical facilities. Be sure to include pending or approved projects submitted for FEMA mitigation grants.

N/FIP

3. Describe any hazard-related concerns or issues regarding the vulnerability of special needs populations, such as the elderly, disabled, low-income, or migrant farm workers.

None for this area

4. How many outdoor warning sirens are in your community? 1

How are they activated (indicate responsible department/personnel)?

County 911 / IN Office

5. Does your community utilize any other warning systems such as Cable Override, Reverse 911, etc? If so, please describe.

County / office / FB Page

6. Does your community have designated public tornado shelters/saferooms? If so, are they constructed in accordance with FEMA standards?

2

Please provide address locations:

— Bethel Christian Church 237 N main street Bethel

— Bethel Comm. Center 146 Maple St. Bethel,

7. Identify residential, commercial and industrial development in your jurisdiction since last plan update.

Flats<sup>also</sup>, Extensive Remodeling of Christian Church,  
drainage line put in fest hall

8. Describe development trends and expected growth areas. Is any new development expected to occur in the 100-year floodplain? Is any new development expected to occur in any other known hazard areas? If possible, please provide a map indicating potential/planned growth areas.

None to my knowledge

9. Are any new facilities or infrastructure planned for construction during the next five years? If so, please provide facility name and purpose along with proposed locations, if known.

Old historic property has been purchase, work has just begun to restore with plans for apartments upstairs and businesses on main floor

10. Please list major employers in your jurisdiction with an estimated number of employees.

Fest hall - 7?

Mesmers - 6

11. Please list Mitigation Planning Committee members who served during the development of the previously approved plan. Was the process set forth for monitoring the implementation of the previously approved mitigation plan adhered to? Did the Committee meet as was specified in the previously approved plan? Why or why not?

Wallace Prince  
Jr. Lund  
Kevin Kattelman  
John Malcarn  
Kathy Lund

They met 1 time a month  
None of these are still on  
the board except  
Kevin Kattelman

12. Describe your jurisdiction's participation in the NFIP. Include information about how compliance with the NFIP is enforced locally.

We have a flood plan administrator that follows through with regular training, works with public to ensure needed permits are filled out and granted, and continues with drive throughs in area of floodplain to stay on top of changes or concerns.





**Economic Assets (Major Employers, etc)**

Asset	Address	Product/ Service	Value (if known)	Number of Employees	Hazards
Mesmer Fertilizer Fest hall	W 1st street N Main				

**Multi-Jurisdictional Hazard Mitigation Plan**  
**Data Collection Questionnaire**  
**For Small Local Governments**

County: SHELBY

Jurisdiction: City of Clarence

Return by: \_\_\_\_\_

Please complete this data collection questionnaire as accurately and completely as possible as this information will appear in the mitigation plan. A data collection questionnaire must be completed for each "jurisdiction" that wishes to be included in the plan. According to FEMA's definition a jurisdiction is any local government, including counties, municipalities, cities, towns, school districts, special districts, councils of government, and tribal organizations. Any of these entities as well as publicly funded colleges and universities that do not participate in the planning process **will not** be eligible applicants for FEMA mitigation funding programs. Please note: School Districts and other Educational Institutions should complete the Data Collection Questionnaire indicated "For School Districts and Educational Institutions".

Prepared by: Dennie Carothers

Phone: 660-699-3310

Email: \_\_\_\_\_

Date: \_\_\_\_\_

**Please return questionnaires by mail, email, or fax to:**

Name: \_\_\_\_\_

Address: \_\_\_\_\_

Email: \_\_\_\_\_

Fax: \_\_\_\_\_

# CAPABILITY ASSESSMENT & INCORPORATION OF EXISTING PLANS, STUDIES, REPORTS AND TECHNICAL INFORMATION

The purpose of this section is to collect information to document existing capabilities as well as determine existing plans, studies, reports, and technical information that may need to be incorporated in the mitigation plan. Although some of this information may have been captured in your previous mitigation plan, it is important to ensure this information is current in the plan update

Please indicate which of the following your jurisdiction has in place. For elements that do not pertain to your type of public entity, please indicate with "N/A". If applicable, please provide a completion date for the element. If your jurisdiction does not have a particular element, and a higher level of government has the authority pertaining to your jurisdiction, please indicate this in the comments column. If your jurisdiction has any of the underlined and bolded elements, please provide a copy of the document to the contact listed on the front and indicate method in the comments column (i.e. available on the web, will email or mail).

Element	Yes, No, N/A	Comments and/or Weblink
<b>Planning Capabilities</b>		
Comprehensive or Land-Use Plan	no	Date:
Capital Improvement Plan	no	Date:
Transportation Plan / Highway Department	no	Date:
Emergency Operations Plan	yes	Date: 2021 update 2022
Local Recovery Plan	no	Date:
Debris Management Plan	no	Date:
Firewise or other fire mitigation plan	yes	Date: 2021 ongoing
Economic Development Plan	no	Date:
<b>Policies/Ordinance</b>		
Zoning Ordinance	yes	
Building Code	yes	Version: Code Book
Floodplain Ordinance	N/A	Date:
Drainage/Stormwater Ordinance	N/A	
Site Plan Review Requirements	yes	
Historic Preservation Ordinance	N/A	



Element	Yes, No, N/A	Comments and/or Weblink
<b>Program</b>		
National Flood Insurance Program (NFIP)	N/A No	
NFIP Community Rating System (CRS) program	→	If so, what is your current level rating?
National Weather Service (NWS) Storm Ready Certification	yes	
Firewise Community Certification	yes	
Building Code Effectiveness Grading (BCEGs)	no	
ISO Fire Rating	Rating: 10	Updating!
Public Education or information programs (i.e., responsible water use, fire safety, household preparedness, or environmental education)	yes	
Mutual Aid Agreements	Five	
<b>Studies/Reports/Maps</b>		
Critical Facilities Inventory	No	
Vulnerable Population Inventory	No	
<b>Staff/Department</b>		<b>Full Time or Part Time?</b>
Building Code Official / Building Inspector	Fire Chief	Part
Engineer	N/A	
Development Planner	N/A	
NFIP Floodplain Administrator	N/A	
Mapping Specialist (GIS)	NO	
Public Works Official	yes	Full
Emergency Management Coordinator	yes City Admin	
Local Emergency Planning Committee	yes City Admin	
Sanitation Department	N/A	
Highway/Transportation Department	yes Utility crew	Full
Economic Development Department	yes City Admin	
Housing Department	NO	
Historic Preservation	NO	

Element	Yes, No, N/A	Comments and/or Weblink
<b>Non-Governmental Organizations (NGOs)</b>	<b>Is there a local chapter? Yes or No</b>	
American Red Cross	no	
Salvation Army	no	
Veterans Groups	yes UFW	
Local Environmental Organization	no	
Homeowner Associations	no	
Neighborhood Associations	no	
Chamber of Commerce	yes County	
Community Organizations (Lions, Kiwanis, etc.)	CYMO-CCBB	
<b>Financial Resources</b>	<b>Is your jurisdiction able to? Yes or No</b>	
Apply for Community Development Block Grants	yes	
Fund projects thru Capital Improvements funding	yes	
Authority to levy taxes for specific purposes	no	
Fees for water, sewer, gas, or electric services	yes	
Impact fees for new development	no	
Incur debt through general obligation bonds	yes	
Incur debt through special tax bonds	yes	
Incur debt through private activities	no	
Withhold spending in hazard prone areas	no	

For plan updates, the plan maintenance process outlined in your previous plan requires all participating jurisdictions to incorporate the requirements of the mitigation plan into other planning mechanisms, when appropriate. A key element of effective implementation of mitigation is for the mitigation plan to be incorporated in existing authorities, policies, programs, and resources. Next to each applicable planning mechanism, indicate how your jurisdiction incorporated the previous mitigation plan. If no incorporation has occurred, please explain, including background information detailing any challenges preventing incorporation.

Planning Capabilities	Method of Incorporation Since Previous Plan or Challenges Preventing Incorporation
Comprehensive or Land-Use Plan	none
Capital Improvement Plan	none
Transportation Plan / Highway Department	Street department clears snow Routes first also trees & debris.
Emergency Operations Plan	Part of Shelly County Plan
Local Recovery Plan	none known
Debris Management Plan	none
Firewise or other fire mitigation plan	Yes Fire Dept
Economic Development Plan	Clarend Community Advancement Corporation works to start new business & help existing business.

**Additional Questions**

1. How is your government structure organized? (Commission, Mayor/City Council how many members)

5 Members elected  
City Admin

2. List any other past or ongoing projects or programs designed to reduce disaster losses, these may include projects to protect critical facilities. Be sure to include pending or approved projects submitted for FEMA mitigation grants.

None known

3. Describe any hazard-related concerns or issues regarding the vulnerability of special needs populations, such as the elderly, disabled, low-income, or migrant farm workers.

Safe area for elderly & disabled

4. How many outdoor warning sirens are in your community? 1

How are they activated (indicate responsible department/personnel)?

911

5. Does your community utilize any other warning systems such as Cable Override, Reverse 911, etc? If so, please describe.

No

6. Does your community have designated public tornado shelters/saferooms? If so, are they constructed in accordance with FEMA standards?

Methodist Church      Christian Church      Catholic Church

Please provide address locations:

301 S Center St.      412 Old Hwy 36      2015 Grand St

7. Identify residential, commercial and industrial development in your jurisdiction since last plan update.

New Dollar General under construction  
Canabus Only Company 100+ employees expected soon

8. Describe development trends and expected growth areas. Is any new development expected to occur in the 100-year floodplain? Is any new development expected to occur in any other known hazard areas? If possible, please provide a map indicating potential/planned growth areas.

*None known as Clarence is not in a flood plain*

9. Are any new facilities or infrastructure planned for construction during the next five years? If so, please provide facility name and purpose along with proposed locations, if known.

*Extensions of Water, Wastewater & Natural Gas lines*

10. Please list major employers in your jurisdiction with an estimated number of employees.

*Nutrien Ag 20 approx  
CoCo Labs 100 approx  
Clarence Care Center estimate 25*

11. Please list Mitigation Planning Committee members who served during the development of the previously approved plan. Was the process set forth for monitoring the implementation of the previously approved mitigation plan adhered to? Did the Committee meet as was specified in the previously approved plan? Why or why not?

12. Describe your jurisdiction's participation in the NFIP. Include information about how compliance with the NFIP is enforced locally.

## VULNERABILITY ASSESSMENT

The purpose of this worksheet is to assess the vulnerable buildings, populations, critical facilities, infrastructure, and other important assets in your community by using the best available data to complete the table. Use the table on the next page to compile a detailed inventory of specific assets at risk including critical facilities and infrastructure; natural, cultural, and historical assets; and economic assets. In the natural hazard column of the asset inventory table, indicate (by assigned abbreviation) which of the following hazards the asset is vulnerable to:

Natural Hazards	
Flooding (Major & Flash) - <b>RF</b>	Drought - <b>D</b>
Levee Failure - <b>LF</b>	Extreme Temperature - <b>ET</b>
Dam Failure - <b>DF</b>	Severe Thunderstorm (incl. winds, hail, lightning) - <b>ST</b>
Earthquake - <b>EQ</b>	Severe Winter Weather (incl. snow, ice, severe cold) - <b>SWW</b>
Land Subsidence / Sinkholes - <b>LSS</b>	Tornadoes - <b>T</b>
Drought - <b>D</b>	Wildfire - <b>WF</b>

### Critical Facilities and Infrastructure

A critical facility may be defined as one that is essential in providing utility or direction either during the response to an emergency or during the recovery operation. FEMA's HAZUS-MH loss estimation software uses the following three categories of critical assets. 'Essential facilities' are those that if damaged would have devastating impacts on disaster response and/or recovery. 'High potential loss facilities' are those that would have a high loss or impact on the community. Transportation and lifeline facilities are third category of critical assets; examples are provided below.

#### Essential Facilities

Hospitals and other medical facilities  
Police stations  
Fire station  
Emergency Operations Centers

#### High Potential Loss Facilities

Power plants  
Dams/levees  
Military installations  
Hazardous material sites  
Schools  
Shelters  
Day care centers  
Nursing homes  
Main government buildings

#### Transportation and Lifeline

Highways, bridges, and tunnels  
Railroads and facilities  
Bus facilities  
Airports  
Water treatment facilities  
Natural gas facilities and pipelines  
Oil facilities and pipelines  
Communications facilities

### Economic Assets

Economic assets at risk may include major employers or primary economic sectors, such as agriculture, whose losses or inoperability would have severe impacts on the community and its ability to recover from disaster.



Name of Asset	Address	Area (sq. ft.)	Replacement Value (Insured) (\$)	Contents Value (\$)	Occupancy/ Capacity (#)	Natural Hazards
High Potential Loss Facilities such as power plants, dams/levees, military installations, hazardous materials sites, shelters, day care centers, nursing homes, main government buildings (Do not include schools—they will be reported by the school districts)						
Clayton Care Center	111 East St.	8,000	\$3,000,000	\$4,500,000	60	ST-T-EQ
Transportation and Lifelines such as highways, bridges, and tunnels; railroads and facilities, bus facilities, airports, water treatment facilities, natural gas facilities and pipelines, oil facilities, oil facilities and pipelines, communications facilities						

\*If replacement cost data is not available, use the best available data (assessed valuation or other method for estimating cost) and explain any data deficiencies.



**Economic Assets (Major Employers, etc)**

CLARENCE

Asset	Address	Product/ Service	Value (if known)	Number of Employees	Hazards
Nutrien Co	101 S MACON	Farm Chemicals		Approx 20	ST-T-EP
CoCo Labs	211 OLD 36 Hwy	CBD products		Approx 20	ST-T-EP

## HISTORIC HAZARD EVENTS

Please fill out the sheet on the next page for each significant hazard event that affected **Your Jurisdiction**. Make as many copies as necessary to record all events and complete with as much detail as possible. This includes all events associated with the hazards listed below that have caused previous damage in your jurisdiction. It is especially important to capture events that either were not included in the previous Hazard Mitigation Plan or occurred since the plan was completed. Attach supporting documentation, photocopies of newspaper articles, or other original sources.

<b>Jurisdiction</b>	
<b>Type of event</b>	
<b>Nature and magnitude of event</b>	
<b>Location</b>	
<b>Date of event</b>	
<b>Injuries</b>	
<b>Deaths</b>	
<b>Property damage</b>	
<b>Infrastructure damage</b>	
<b>Crop damage</b>	
<b>Business/economic impacts</b>	
<b>Road/school/other closures</b>	
<b>Other damage</b>	
<b>Insured losses</b>	
<b>Federal/state disaster relief funding</b>	
<b>Source of information</b>	
<b>Comments</b>	<i>Nothing major during my employment</i>

## HISTORIC HAZARD EVENTS (continued)

Please fill out the sheet on the next page for each significant hazard event that affected **Your Jurisdiction**. **Make as many copies as necessary to record all events** and complete with as much detail as possible. This includes all events associated with the hazards listed below that have caused previous damage in your jurisdiction. It is especially important to capture events that either were not included in the previous Hazard Mitigation Plan or occurred since the plan was completed. Attach supporting documentation, photocopies of newspaper articles, or other original sources.

<b>Jurisdiction</b>	
<b>Type of event</b>	
<b>Nature and magnitude of event</b>	
<b>Location</b>	
<b>Date of event</b>	
<b>Injuries</b>	
<b>Deaths</b>	
<b>Property damage</b>	
<b>Infrastructure damage</b>	
<b>Crop damage</b>	
<b>Business/economic impacts</b>	
<b>Road/school/other closures</b>	
<b>Other damage</b>	
<b>Insured losses</b>	
<b>Federal/state disaster relief funding</b>	
<b>Source of information</b>	
<b>Comments</b>	

## ASSESSMENT OF PREVIOUSLY PROPOSED ACTIONS

**Jurisdiction:** \_\_\_\_\_

The contractor/plan development facilitator has provided a list of actions proposed in the previously approved plan for each jurisdiction. Use the worksheet below to evaluate whether each action is still current, feasible, desirable, and/or creates benefit that outweighs the cost.

The worksheet should include information on the status of the action and progress made in implementation, if any. This includes:

- For **completed actions** provide a description of the implementation process. This may be a success story you would like to publicize in your community.
- Some of the actions might have been **ongoing** in nature, such public information and education programs. When this is the case, indicate what activity has occurred during the previous five years, and indicate if this program is still viable enough that it should be carried on into the future.
- If **no progress** has been made in the implementation of a given action, discuss why. Note that implementation is not a requirement. However, if no progress has been made, perhaps this is an action that would be appropriate to delete in the updated plan.

During review of the previously approved actions, consider whether any new actions should be proposed. Perhaps damages from a recent hazard event have indicated the need for new approaches to protect property and life. Review the problem statements from the updated plan for ideas. Also review the FEMA publication *Mitigation Ideas: A Resource for Reducing Risk to Natural Hazards (January 2013)*.

#	Action	Status			Description of Implementation Activities or Reasons for Lack of Progress	Keep – ✓ Delete – X Modify – M
		Complete	Ongoing	No Progress		



# Multi-Jurisdictional Hazard Mitigation Plan

## Data Collection Questionnaire

### For Small Local Governments

County: Shelby

Jurisdiction: Hunnewell

Return by: \_\_\_\_\_

Please complete this data collection questionnaire as accurately and completely as possible as this information will appear in the mitigation plan. A data collection questionnaire must be completed for each "jurisdiction" that wishes to be included in the plan. According to FEMA's definition a jurisdiction is any local government, including counties, municipalities, cities, towns, school districts, special districts, councils of government, and tribal organizations. Any of these entities as well as publicly funded colleges and universities that do not participate in the planning process **will not** be eligible applicants for FEMA mitigation funding programs. Please note: School Districts and other Educational Institutions should complete the Data Collection Questionnaire indicated "For School Districts and Educational Institutions".

Prepared by: Brenda Gruber

Phone: 573-983-2264

Email: hunnewellclerk@centurytel.net

Date: 12-6-22

**Please return questionnaires by mail, email, or fax to:**

Name: Anna Gill

Address: 42494 Delaware Lane, Perry, MO 63462

Email: agill@manetwaincog.com

Fax: —

# CAPABILITY ASSESSMENT & INCORPORATION OF EXISTING PLANS, STUDIES, REPORTS AND TECHNICAL INFORMATION

The purpose of this section is to collect information to document existing capabilities as well as determine existing plans, studies, reports, and technical information that may need to be incorporated in the mitigation plan. Although some of this information may have been captured in your previous mitigation plan, it is important to ensure this information is current in the plan update

Please indicate which of the following your jurisdiction has in place. For elements that do not pertain to your type of public entity, please indicate with "N/A". If applicable, please provide a completion date for the element. If your jurisdiction does not have a particular element, and a higher level of government has the authority pertaining to your jurisdiction, please indicate this in the comments column. If your jurisdiction has any of the **underlined and bolded** elements, please provide a copy of the document to the contact listed on the front and indicate method in the comments column (i.e. available on the web, will email or mail).

Element	Yes, No, N/A	Comments and/or Weblink
<b>Planning Capabilities</b>		
Comprehensive or Land-Use Plan		Date:
Capital Improvement Plan		Date:
Transportation Plan / Highway Department	<i>N/A</i>	Date:
Emergency Operations Plan		Date:
Local Recovery Plan		Date:
Debris Management Plan		Date:
Firewise or other fire mitigation plan		Date:
Economic Development Plan		Date:
<b>Policies/Ordinance</b>		
Zoning Ordinance		
Building Code		Version:
Floodplain Ordinance	<i>N/A</i>	Date:
Drainage/Stormwater Ordinance		
Site Plan Review Requirements		
Historic Preservation Ordinance		

Element	Yes, No, N/A	Comments and/or Weblink
<b>Program</b>		
National Flood Insurance Program (NFIP)	no	
NFIP Community Rating System (CRS) program	N/A	If so, what is your current level rating?
National Weather Service (NWS) Storm Ready Certification	no	
Firewise Community Certification	no	
Building Code Effectiveness Grading (BCEGs)	no	
ISO Fire Rating	Rating:	
Public Education or information programs (i.e., responsible water use, fire safety, household preparedness, or environmental education)	no	
Mutual Aid Agreements	no	
<b>Studies/Reports/Maps</b>		
Critical Facilities Inventory	no	
Vulnerable Population Inventory	no	
<b>Staff/Department</b>		<b>Full Time or Part Time?</b>
Building Code Official / Building Inspector	no	
Engineer	no	
Development Planner	no	
NFIP Floodplain Administrator	no	
Mapping Specialist (GIS)	no	
Public Works Official	no	
Emergency Management Coordinator	no	
Local Emergency Planning Committee	no	
Sanitation Department	no	
Highway/Transportation Department	no	
Economic Development Department	no	
Housing Department	no	
Historic Preservation	no	



Element	Yes, No, N/A	Comments and/or Weblink
<b>Non-Governmental Organizations (NGOs)</b>	<b>Is there a local chapter? Yes or No</b>	
American Red Cross	no	
Salvation Army	no	
Veterans Groups	no	
Local Environmental Organization	no	
Homeowner Associations	no	
Neighborhood Associations	no	
Chamber of Commerce	no	
Community Organizations (Lions, Kiwanis, etc.)	no	
<b>Financial Resources</b>	<b>Is your jurisdiction able to? Yes or No</b>	
Apply for Community Development Block Grants		yes
Fund projects thru Capital Improvements funding		
Authority to levy taxes for specific purposes		
Fees for water, sewer, gas, or electric services		yes
Impact fees for new development		
Incur debt through general obligation bonds		no
Incur debt through special tax bonds		no
Incur debt through private activities		no
Withhold spending in hazard prone areas		no

**For plan updates, the plan maintenance process outlined in your previous plan requires all participating jurisdictions to incorporate the requirements of the mitigation plan into other planning mechanisms, when appropriate. A key element of effective implementation of mitigation is for the mitigation plan to be incorporated in existing authorities, policies, programs, and resources. Next to each applicable planning mechanism, indicate how your jurisdiction incorporated the previous mitigation plan. If no incorporation has occurred, please explain, including background information detailing any challenges preventing incorporation.**

Planning Capabilities	Method of Incorporation Since Previous Plan or Challenges Preventing Incorporation
Comprehensive or Land-Use Plan	
Capital Improvement Plan	
Transportation Plan / Highway Department	
Emergency Operations Plan	
Local Recovery Plan	
Debris Management Plan	
Firewise or other fire mitigation plan	
Economic Development Plan	

## Additional Questions

1. How is your government structure organized? (Commission, Mayor/City Council, how many members)

*Mayor / Council*

2. List any other past or ongoing projects or programs designed to reduce disaster losses, these may include projects to protect critical facilities. Be sure to include pending or approved projects submitted for FEMA mitigation grants.

3. Describe any hazard-related concerns or issues regarding the vulnerability of special needs populations, such as the elderly, disabled, low-income, or migrant farm workers.

4. How many outdoor warning sirens are in your community? *1*

How are they activated (indicate responsible department/personnel)? *Shelby Co 911*

5. Does your community utilize any other warning systems such as Cable Override, Reverse 911, etc? If so, please describe. *no*

6. Does your community have designated public tornado shelters/saferooms? If so, are they constructed in accordance with FEMA standards? *no*

Please provide address locations:

7. Identify residential, commercial and industrial development in your jurisdiction since last plan update.

8. Describe development trends and expected growth areas. Is any new development expected to occur in the 100-year floodplain? Is any new development expected to occur in any other known hazard areas? If possible, please provide a map indicating potential/planned growth areas.
  
9. Are any new facilities or infrastructure planned for construction during the next five years? If so, please provide facility name and purpose along with proposed locations, if known. *no*
  
10. Please list major employers in your jurisdiction with an estimated number of employees. *1*
  
11. Please list Mitigation Planning Committee members who served during the development of the previously approved plan. Was the process set forth for monitoring the implementation of the previously approved mitigation plan adhered to? Did the Committee meet as was specified in the previously approved plan? Why or why not?
  
12. Describe your jurisdiction's participation in the NFIP. Include information about how compliance with the NFIP is enforced locally.

# VULNERABILITY ASSESSMENT

The purpose of this worksheet is to assess the vulnerable buildings, populations, critical facilities, infrastructure, and other important assets in your community by using the best available data to complete the table. Use the table on the next page to compile a detailed inventory of specific assets at risk including critical facilities and infrastructure; natural, cultural, and historical assets; and economic assets. In the natural hazard column of the asset inventory table, indicate (by assigned abbreviation) which of the following hazards the asset is vulnerable to:

Natural Hazards	
Flooding (Major & Flash) - RF	Drought - D
Levee Failure - LF	Extreme Temperature - ET
Dam Failure - DF	Severe Thunderstorm (incl. winds, hail, lightning) - ST
Earthquake - EQ	Severe Winter Weather (incl. snow, ice, severe cold) - SWW
Land Subsidence / Sinkholes - LSS	Tornadoes - T
Drought - D	Wildfire - WF

## Critical Facilities and Infrastructure

A critical facility may be defined as one that is essential in providing utility or direction either during the response to an emergency or during the recovery operation. FEMA's HAZUS-MH loss estimation software uses the following three categories of critical assets. 'Essential facilities' are those that if damaged would have devastating impacts on disaster response and/or recovery. 'High potential loss facilities' are those that would have a high loss or impact on the community. Transportation and lifeline facilities are third category of critical assets; examples are provided below.

### Essential Facilities

Hospitals and other medical facilities  
 Police stations  
 Fire station  
 Emergency Operations Centers

### High Potential Loss Facilities

Power plants  
 Dams/levees  
 Military installations  
 Hazardous material sites  
 Schools  
 Shelters  
 Day care centers  
 Nursing homes  
 Main government buildings

### Transportation and Lifeline

Highways, bridges, and tunnels  
 Railroads and facilities  
 Bus facilities  
 Airports  
 Water treatment facilities  
 Natural gas facilities and pipelines  
 Oil facilities and pipelines  
 Communications facilities

## Economic Assets

Economic assets at risk may include major employers or primary economic sectors, such as agriculture, whose losses or inoperability would have severe impacts on the community and its ability to recover from disaster.



Name of Asset	Address	Area (sq.ft.)	Replacement Value (Insured) (\$)	Contents Value (\$)	Occupancy/ Capacity (#)	Natural Hazards
High Potential Loss Facilities such as power plants, dams/levees, military installations, hazardous materials sites, shelters, day care centers, nursing homes, main government buildings (Do not include schools—they will be reported by the school districts)						
	None					
Transportation and Lifelines such as highways, bridges, and tunnels; railroads and facilities, bus facilities, airports, water treatment facilities, natural gas facilities and pipelines, oil facilities, oil facilities and pipelines, communications facilities						

**\*If replacement cost data is not available, use the best available data (assessed valuation or other method for estimating cost) and explain any data deficiencies.**

**Economic Assets (Major Employers, etc)**

<b>Asset</b>	<b>Address</b>	<b>Product/ Service</b>	<b>Value (if known)</b>	<b>Number of Employees</b>	<b>Hazards</b>



## HISTORIC HAZARD EVENTS

Please fill out the sheet on the next page for each significant hazard event that affected **Your Jurisdiction**. **Make as many copies as necessary to record all events** and complete with as much detail as possible. This includes all events associated with the hazards listed below that have caused previous damage in your jurisdiction. It is especially important to capture events that either were not included in the previous Hazard Mitigation Plan or occurred since the plan was completed. Attach supporting documentation, photocopies of newspaper articles, or other original sources.

<b>Jurisdiction</b>	
<b>Type of event</b>	<i>none</i>
<b>Nature and magnitude of event</b>	
<b>Location</b>	
<b>Date of event</b>	
<b>Injuries</b>	
<b>Deaths</b>	
<b>Property damage</b>	
<b>Infrastructure damage</b>	
<b>Crop damage</b>	
<b>Business/economic impacts</b>	
<b>Road/school/other closures</b>	
<b>Other damage</b>	
<b>Insured losses</b>	
<b>Federal/state disaster relief funding</b>	
<b>Source of information</b>	
<b>Comments</b>	

## HISTORIC HAZARD EVENTS (continued)

Please fill out the sheet on the next page for each significant hazard event that affected **Your Jurisdiction**. **Make as many copies as necessary to record all events** and complete with as much detail as possible. This includes all events associated with the hazards listed below that have caused previous damage in your jurisdiction. It is especially important to capture events that either were not included in the previous Hazard Mitigation Plan or occurred since the plan was completed. Attach supporting documentation, photocopies of newspaper articles, or other original sources.

<b>Jurisdiction</b>	
<b>Type of event</b>	
<b>Nature and magnitude of event</b>	
<b>Location</b>	
<b>Date of event</b>	
<b>Injuries</b>	
<b>Deaths</b>	
<b>Property damage</b>	
<b>Infrastructure damage</b>	
<b>Crop damage</b>	
<b>Business/economic impacts</b>	
<b>Road/school/other closures</b>	
<b>Other damage</b>	
<b>Insured losses</b>	
<b>Federal/state disaster relief funding</b>	
<b>Source of information</b>	
<b>Comments</b>	

# ASSESSMENT OF PREVIOUSLY PROPOSED ACTIONS

**Jurisdiction:** \_\_\_\_\_

The contractor/plan development facilitator has provided a list of actions proposed in the previously approved plan for each jurisdiction. Use the worksheet below to evaluate whether each action is still current, feasible, desirable, and/or creates benefit that outweighs the cost.

The worksheet should include information on the status of the action and progress made in implementation, if any. This includes:

- For **completed actions** provide a description of the implementation process. This may be a success story you would like to publicize in your community.
- Some of the actions might have been **ongoing** in nature, such public information and education programs. When this is the case, indicate what activity has occurred during the previous five years, and indicate if this program is still viable enough that it should be carried on into the future.
- If **no progress** has been made in the implementation of a given action, discuss why. Note that implementation is not a requirement. However, if no progress has been made, perhaps this is an action that would be appropriate to delete in the updated plan.

During review of the previously approved actions, consider whether any new actions should be proposed. Perhaps damages from a recent hazard event have indicated the need for new approaches to protect property and life. Review the problem statements from the updated plan for ideas. Also review the FEMA publication *Mitigation Ideas: A Resource for Reducing Risk to Natural Hazards (January 2013)*.

#	Action	Status			Description of Implementation Activities or Reasons for Lack of Progress	Keep – ✓ Delete – X Modify – M
		Complete	Ongoing	No Progress		



**Multi-Jurisdictional Hazard Mitigation Plan**  
**Data Collection Questionnaire**  
**For Small Local Governments**

County: Shelby \_\_\_\_\_

Jurisdiction: City of Shelbina \_\_\_\_\_

Return by: \_\_\_\_\_

Please complete this data collection questionnaire as accurately and completely as possible as this information will appear in the mitigation plan. A data collection questionnaire must be completed for each "jurisdiction" that wishes to be included in the plan. According to FEMA's definition a jurisdiction is any local government, including counties, municipalities, cities, towns, school districts, special districts, councils of government, and tribal organizations. Any of these entities as well as publicly funded colleges and universities that do not participate in the planning process **will not** be eligible applicants for FEMA mitigation funding programs. Please note: School Districts and other Educational Institutions should complete the Data Collection Questionnaire indicated "For School Districts and Educational Institutions".

Prepared by: City of Shelbina \_\_\_\_\_

Phone: 573-588-4104 \_\_\_\_\_

Email: operations@cityofshelbina.com \_\_\_\_\_

Date: 1/6/2023 \_\_\_\_\_

**Please return questionnaires by mail, email, or fax to:**

Name: \_\_\_\_\_

Address: \_\_\_\_\_

Email: \_\_\_\_\_

Fax: \_\_\_\_\_

# CAPABILITY ASSESSMENT & INCORPORATION OF EXISTING PLANS, STUDIES, REPORTS AND TECHNICAL INFORMATION

The purpose of this section is to collect information to document existing capabilities as well as determine existing plans, studies, reports, and technical information that may need to be incorporated in the mitigation plan. Although some of this information may have been captured in your previous mitigation plan, it is important to ensure this information is current in the plan update

Please indicate which of the following your jurisdiction has in place. For elements that do not pertain to your type of public entity, please indicate with "N/A". If applicable, please provide a completion date for the element. If your jurisdiction does not have a particular element, and a higher level of government has the authority pertaining to your jurisdiction, please indicate this in the comments column. If your jurisdiction has any of the **underlined and bolded** elements, please provide a copy of the document to the contact listed on the front and indicate method in the comments column (i.e. available on the web, will email or mail).

Element	Yes, No, N/A	Comments and/or Weblink
<b>Planning Capabilities</b>		
Comprehensive or Land-Use Plan	YES	Date:
Capital Improvement Plan		Date:
Transportation Plan / Highway Department		Date:
Emergency Operations Plan	Yes	Date:
Local Recovery Plan	Yes	Date: 8/2021
Debris Management Plan		Date:
Firewise or other fire mitigation plan		Date:
Economic Development Plan	Yes	Date:
<b>Policies/Ordinance</b>		
Zoning Ordinance	Yes	
Building Code	BOCA	Version: current version
Floodplain Ordinance	Yes	Date:
Drainage/Stormwater Ordinance	NO	
Site Plan Review Requirements	YES	
Historic Preservation Ordinance	NO	

Element	Yes, No, N/A	Comments and/or Weblink
<b>Program</b>		
National Flood Insurance Program (NFIP)	Yes	
NFIP Community Rating System (CRS) program	No	If so, what is your current level rating?
National Weather Service (NWS) Storm Ready Certification		
Firewise Community Certification		
Building Code Effectiveness Grading (BCEGs)		
ISO Fire Rating	Rating: 05/5Y	
Public Education or information programs (i.e., responsible water use, fire safety, household preparedness, or environmental education)	YES	
Mutual Aid Agreements	Yes	
<b>Studies/Reports/Maps</b>		
Critical Facilities Inventory	YES	
Vulnerable Population Inventory		
<b>Staff/Department</b>		<b>Full Time or Part Time?</b>
Building Code Official / Building Inspector	City Superintendent	Full Time
Engineer		
Development Planner		
NFIP Floodplain Administrator	Asst. City Superintendent	Ful Time
Mapping Specialist (GIS)		
Public Works Official		
Emergency Management Coordinator	City Superintendent	Full Time
Local Emergency Planning Committee		
Sanitation Department		
Highway/Transportation Department	No	
Economic Development Department	Yes	Part time
Housing Department		
Historic Preservation		

Element	Yes, No, N/A	Comments and/or Weblink
<b>Non-Governmental Organizations (NGOs)</b>	<b>Is there a local chapter? Yes or No</b>	
American Red Cross		
Salvation Army		
Veterans Groups	YES	
Local Environmental Organization		
Homeowner Associations		
Neighborhood Associations		
Chamber of Commerce	YES	
Community Organizations (Lions, Kiwanis, etc.	Yes	
<b>Financial Resources</b>		<b>Is your jurisdiction able to? Yes or No</b>
Apply for Community Development Block Grants		Yes
Fund projects thru Capital Improvements funding		Yes
Authority to levy taxes for specific purposes		No
Fees for water, sewer, gas, or electric services		Yes
Impact fees for new development		No
Incur debt through general obligation bonds		Yes
Incur debt through special tax bonds		Yes
Incur debt through private activities		No
Withhold spending in hazard prone areas		No



**For plan updates, the plan maintenance process outlined in your previous plan requires all participating jurisdictions to incorporate the requirements of the mitigation plan into other planning mechanisms, when appropriate. A key element of effective implementation of mitigation is for the mitigation plan to be incorporated in existing authorities, policies, programs, and resources. Next to each applicable planning mechanism, indicate how your jurisdiction incorporated the previous mitigation plan. If no incorporation has occurred, please explain, including background information detailing any challenges preventing incorporation.**

Planning Capabilities	Method of Incorporation Since Previous Plan or Challenges Preventing Incorporation
Comprehensive or Land-Use Plan	Yes, Zoning Ordinance
Capital Improvement Plan	Yes, All plans are integrated into our Integrated Management Plan
Transportation Plan / Highway Department	No
Emergency Operations Plan	Yes.
Local Recovery Plan	No
Debris Management Plan	No
Firewise or other fire mitigation plan	No
Economic Development Plan	Yes

## Additional Questions

1. How is your government structure organized? (Commission, Mayor/City Council, how many members)

Mayor/Board of Aldermen, 5 members

2. List any other past or ongoing projects or programs designed to reduce disaster losses, these may include projects to protect critical facilities. Be sure to include pending or approved projects submitted for FEMA mitigation grants.

Natural gas public awareness program.

3. Describe any hazard-related concerns or issues regarding the vulnerability of special needs populations, such as the elderly, disabled, low-income, or migrant farm workers.

Ongoing ditching and drainage clearance.

4. How many outdoor warning sirens are in your community? 4

How are they activated (indicate responsible department/personnel)? 911, or water plant

5. Does your community utilize any other warning systems such as Cable Override, Reverse 911, etc? If so, please describe. No
6. Does your community have designated public tornado shelters/saferooms? If so, are they constructed in accordance with FEMA standards? Yes.

Please provide address locations:

Shelbina Carnegie Library 100 N Center., Shelbina Masonic Lodge 313 S. Center, St Mary's Catholic Church 309 E Chestnut, United Methodist Church 200 E Spruce.

7. Identify residential, commercial and industrial development in your jurisdiction since last plan update.

A few new homes. 3 new commercial building.

8. Describe development trends and expected growth areas. Is any new development expected to occur in the 100-year floodplain? Is any new development expected to occur in any other known hazard areas? If possible, please provide a map indicating potential/planned growth areas.

No

9. Are any new facilities or infrastructure planned for construction during the next five years? If so, please provide facility name and purpose along with proposed locations, if known.

Sewer plant new discharge on effluent.

10. Please list major employers in your jurisdiction with an estimated number of employees.

Cerro Copper 126	Ayerco 10
Salt River Nursing Home 30	Casey 10
O'Laughlin 20	Shelbina Villa LifeCare 15
C & R Grocery 10	Shelby Senior Citizen 10

11. Please list Mitigation Planning Committee members who served during the development of the previously approved plan. Was the process set forth for monitoring the implementation of the previously approved mitigation plan adhered to? Did the Committee meet as was specified in the previously approved plan? Why or why not?

Dennis Klusmeyer, City employees. Met annually.

12. Describe your jurisdiction's participation in the NFIP. Include information about how compliance with the NFIP is enforced locally.

Through floodplain administrator.

# VULNERABILITY ASSESSMENT

The purpose of this worksheet is to assess the vulnerable buildings, populations, critical facilities, infrastructure, and other important assets in your community by using the best available data to complete the table. Use the table on the next page to compile a detailed inventory of specific assets at risk including critical facilities and infrastructure; natural, cultural, and historical assets; and economic assets. In the natural hazard column of the asset inventory table, indicate (by assigned abbreviation) which of the following hazards the asset is vulnerable to:

Natural Hazards	
Flooding (Major & Flash) - <b>RF</b>	Drought - <b>D</b>
Levee Failure - <b>LF</b>	Extreme Temperature - <b>ET</b>
Dam Failure - <b>DF</b>	Severe Thunderstorm (incl. winds, hail, lightning) - <b>ST</b>
Earthquake - <b>EQ</b>	Severe Winter Weather (incl. snow, ice, severe cold) - <b>SWW</b>
Land Subsidence / Sinkholes - <b>LSS</b>	Tornadoes - <b>T</b>
Drought - <b>D</b>	Wildfire - <b>WF</b>

## Critical Facilities and Infrastructure

A critical facility may be defined as one that is essential in providing utility or direction either during the response to an emergency or during the recovery operation. FEMA’s HAZUS-MH loss estimation software uses the following three categories of critical assets. ‘Essential facilities’ are those that if damaged would have devastating impacts on disaster response and/or recovery. ‘High potential loss facilities’ are those that would have a high loss or impact on the community. Transportation and lifeline facilities are third category of critical assets; examples are provided below.

### Essential Facilities

Hospitals and other medical facilities  
 Police stations  
 Fire station  
 Emergency Operations Centers

### High Potential Loss Facilities

Power plants  
 Dams/levees  
 Military installations  
 Hazardous material sites  
 Schools  
 Shelters  
 Day care centers  
 Nursing homes  
 Main government buildings

### Transportation and Lifeline

Highways, bridges, and tunnels  
 Railroads and facilities  
 Bus facilities  
 Airports  
 Water treatment facilities  
 Natural gas facilities and pipelines  
 Oil facilities and pipelines  
 Communications facilities

## Economic Assets

Economic assets at risk may include major employers or primary economic sectors, such as agriculture, whose losses or inoperability would have severe impacts on the community and its ability to recover from disaster.

### Asset Inventory

Please list critical facilities and other community assets, the square feet, values, and occupancy/capacity. If not applicable, enter "N/A". In the last column, use the codes from the previous page to indicate hazards to which the asset is vulnerable. Add as many rows as needed. If this information is available in GIS format, please provide.

### Critical Facilities

Name of Asset	Address	Area (sq.ft.)	Replacement Value (Insured) (\$)	Contents Value (\$)	Occupancy/ Capacity (#)	Natural Hazards
<b>Essential Facilities such as hospitals and other medical facilities, police and fire stations, Emergency Operations Centers</b>						
Salt River Care	142 Shelby Plaza				120	EQ, ST, ET, T, SWW, RF
Senior Citizens	119 E. Chestnut St.					EQ, ST, ET, T, SWW, RF EQ, ST,
Villa Life Care	218 E. Shelbina Ave					EQ, ST, ET, T, SWW, RF EQ, ST,
Shelbina Clinic	403 S. Center St.					EQ, ST, ET, T, SWW, RF EQ, ST,
Shelbina Fire Department	204 W. Chestnut St.					EQ, ST, ET, T, SWW, RF EQ, ST,
Shelby County Fairgrounds	6762 N Hwy 15					EQ, ST, ET, T, SWW, RF EQ, ST,
Shelbina Police Department	116 E. Walnut St.		65,529.95	20,000		EQ, ST, ET, T, SWW, RF
Shelbina City Office	116 E. Walnut St.		553,798	45,100		EQ, ST, ET, T, SWW, RF EQ, ST,

Name of Asset	Address	Area (sq.ft.)	Replacement Value (Insured) (\$)	Contents Value (\$)	Occupancy/ Capacity (#)	Natural Hazards
High Potential Loss Facilities such as power plants, dams/levees, military installations, hazardous materials sites, shelters, day care centers, nursing homes, main government buildings (Do not include schools—they will be reported by the school districts)						
Salt River Nursing Home	142 Shelby Plaza					EQ, ST, ET, T, SWW, RF EQ, ST,
Villa Life Care	218 E. Shelbyna Ave.					EQ, ST, ET, T, SWW, RF EQ, ST,
Power Plant 1 & 2	411 W. Chestnut St.		7,281,800.	210,000		EQ, ST, ET, T, SWW, RF EQ, ST,
Power Plant 3	104 N. Douglas St.		3,040,000	75,000		EQ, ST, ET, T, SWW, RF EQ, ST,
Shelbina Lake Dam & Bridge	Golf Course Dr.		1,000,000			EQ, ST, ET, T, DF, SWW, RF EQ, ST,
Shelbina Water Plant	410 W. Chestnut St.		551,709	25,000		EQ, ST, ET, T, SWW, RF EQ, ST,
Shelbina Sewer Plant	206 W. Shelbyna Ave.		699,939	265,351		EQ, ST, ET, T, SWW, RF EQ, ST,
Transportation and Lifelines such as highways, bridges, and tunnels; railroads and facilities, bus facilities, airports, water treatment facilities, natural gas facilities and pipelines, oil facilities, oil facilities and pipelines, communications facilities						
Shelbina Lake Bridge	Golf Course Dr.		500,000			EQ, DF SWW
Shelbina Water Plant	410 W. Chestnut St.		551,709	25,000		EQ, ST, ET, T, SWW, RF EQ, ST,
Shelbina Sewer Plant	206 W. Shelbyna Ave.		699,939	265,351		EQ, ST, ET, T, SWW, RF EQ, ST,
Lift Station	550 E. Maple St.		230,000			EQ, ST, ET, T, SWW, RF EQ, ST,
Lift Station	307 E. Elm St.		105,000			EQ, ST, ET, T, SWW, RF EQ, ST,
Lift Station	706 N. Center St.		150,000			EQ, ST, ET, T, SWW, RF EQ, ST,
Lift Station	700 E. College St.		150,000			EQ, ST, ET, T, SWW, RF EQ, ST,
Water Tower 200,000 gl	512 N Livingston St.		446,283			EQ, ST, ET, T, SWW, RF EQ, ST,
Water Tower 100,000 gl	100 N 6 <sup>th</sup> St.		290,453			EQ, ST, ET, T, SWW, RF EQ, ST,

**\*If replacement cost data is not available, use the best available data (assessed valuation or other method for estimating cost) and explain any data deficiencies.**

**Economic Assets (Major Employers, etc)**

<b>Asset</b>	<b>Address</b>	<b>Product/ Service</b>	<b>Value (if known)</b>	<b>Number of Employees</b>	<b>Hazards</b>
Cerro Flow	101 S. Douglas	Copper tubing		126	EQ, ST, ET, T, SWW, RF EQ
Salt River Nursing Home	142. Shelby Plaza Road	Nursing Home		50	EQ, ST, ET, T, SWW, RF EQ
O'Laughlin Inc	499 N 4 <sup>th</sup> St.	Trucking, concrete		15	EQ, ST, ET, T, SWW, RF EQ
Villa Life Care	218 E. Shelbina Ave.	Assisted Living		15	EQ, ST, ET, T, SWW, RF EQ



## HISTORIC HAZARD EVENTS

Please fill out the sheet on the next page for each significant hazard event that affected **Your Jurisdiction**. **Make as many copies as necessary to record all events** and complete with as much detail as possible. This includes all events associated with the hazards listed below that have caused previous damage in your jurisdiction. It is especially important to capture events that either were not included in the previous Hazard Mitigation Plan or occurred since the plan was completed. Attach supporting documentation, photocopies of newspaper articles, or other original sources.

<b>Jurisdiction</b>	City of Shelbina
<b>Type of event</b>	Tornados 2011
<b>Nature and magnitude of event</b>	EF1
<b>Location</b>	Shelbina City Limits
<b>Date of event</b>	June 2011
<b>Injuries</b>	None
<b>Deaths</b>	None
<b>Property damage</b>	Moderate
<b>Infrastructure damage</b>	Electric system, poles, roofs
<b>Crop damage</b>	NA
<b>Business/economic impacts</b>	No electric, water or sewer service
<b>Road/school/other closures</b>	City Streets from debris
<b>Other damage</b>	Public property, roofs, light structure damage
<b>Insured losses</b>	
<b>Federal/state disaster relief funding</b>	N/A
<b>Source of information</b>	
<b>Comments</b>	

## HISTORIC HAZARD EVENTS (continued)

Please fill out the sheet on the next page for each significant hazard event that affected **Your Jurisdiction**. **Make as many copies as necessary to record all events** and complete with as much detail as possible. This includes all events associated with the hazards listed below that have caused previous damage in your jurisdiction. It is especially important to capture events that either were not included in the previous Hazard Mitigation Plan or occurred since the plan was completed. Attach supporting documentation, photocopies of newspaper articles, or other original sources.

<b>Jurisdiction</b>	
<b>Type of event</b>	
<b>Nature and magnitude of event</b>	
<b>Location</b>	
<b>Date of event</b>	
<b>Injuries</b>	
<b>Deaths</b>	
<b>Property damage</b>	
<b>Infrastructure damage</b>	
<b>Crop damage</b>	
<b>Business/economic impacts</b>	
<b>Road/school/other closures</b>	
<b>Other damage</b>	
<b>Insured losses</b>	
<b>Federal/state disaster relief funding</b>	
<b>Source of information</b>	
<b>Comments</b>	

# ASSESSMENT OF PREVIOUSLY PROPOSED ACTIONS

**Jurisdiction:** City of Shelbyna

The contractor/plan development facilitator has provided a list of actions proposed in the previously approved plan for each jurisdiction. Use the worksheet below to evaluate whether each action is still current, feasible, desirable, and/or creates benefit that outweighs the cost.

The worksheet should include information on the status of the action and progress made in implementation, if any. This includes:

- For **completed actions** provide a description of the implementation process. This may be a success story you would like to publicize in your community.
- Some of the actions might have been **ongoing** in nature, such public information and education programs. When this is the case, indicate what activity has occurred during the previous five years, and indicate if this program is still viable enough that it should be carried on into the future.
- If **no progress** has been made in the implementation of a given action, discuss why. Note that implementation is not a requirement. However, if no progress has been made, perhaps this is an action that would be appropriate to delete in the updated plan.

During review of the previously approved actions, consider whether any new actions should be proposed. Perhaps damages from a recent hazard event have indicated the need for new approaches to protect property and life. Review the problem statements from the updated plan for ideas. Also review the FEMA publication *Mitigation Ideas: A Resource for Reducing Risk to Natural Hazards (January 2013)*.

#	Action	Status			Description of Implementation Activities or Reasons for Lack of Progress	Keep – ✓ Delete – X Modify – M
		Complete	Ongoing	No Progress		
RF	Maintain and clean culverts on a regular basis		Ongoing		Ongoing	✓
RF, T, SWW EQ	Generators for Water Plant, Lake Pump House		Ongoing		Funding to become available, LF, F-S-F grants	✓
RF, T, SWW EQ	Security Hardening for Utility assets		Ongoing		Water Towers, Pump Houses, Lift Stations, Natural Gas Regulator/metering stations/valve stations. Seeking funding LF, F-S-F possibility	✓

#	Action	Status			Description of Implementation Activities or Reasons for Lack of Progress	Keep – ✓ Delete – X Modify – M
		Complete	Ongoing	No Progress		
RF, T, SWW, EQ	Generators for Emergency Shelters		Ongoing		Funding to become available LF, F-S-F grants	✓
RF, T, SWW, EQ	Storm Warning Siren		Ongoing		Funding to become available LF, F-S-F grants	✓



**Multi-Jurisdictional Hazard Mitigation Plan**  
**Data Collection Questionnaire**  
**For Small Local Governments**

County: Shelby

Jurisdiction: City of Shelbyville

Return by: \_\_\_\_\_

Please complete this data collection questionnaire as accurately and completely as possible as this information will appear in the mitigation plan. A data collection questionnaire must be completed for each "jurisdiction" that wishes to be included in the plan. According to FEMA's definition a jurisdiction is any local government, including counties, municipalities, cities, towns, school districts, special districts, councils of government, and tribal organizations. Any of these entities as well as publicly funded colleges and universities that do not participate in the planning process **will not** be eligible applicants for FEMA mitigation funding programs. Please note: School Districts and other Educational Institutions should complete the Data Collection Questionnaire indicated "For School Districts and Educational Institutions".

Prepared by: Gina Mesmer

Phone: 573-633-2520

Email: shelbyville@marktwain.net

Date: 11/14/22

**Please return questionnaires by mail, email, or fax to:**

Name: \_\_\_\_\_

Address: \_\_\_\_\_

Email: \_\_\_\_\_

Fax: \_\_\_\_\_

# CAPABILITY ASSESSMENT & INCORPORATION OF EXISTING PLANS, STUDIES, REPORTS AND TECHNICAL INFORMATION

The purpose of this section is to collect information to document existing capabilities as well as determine existing plans, studies, reports, and technical information that may need to be incorporated in the mitigation plan. Although some of this information may have been captured in your previous mitigation plan, it is important to ensure this information is current in the plan update

Please indicate which of the following your jurisdiction has in place. For elements that do not pertain to your type of public entity, please indicate with "N/A". If applicable, please provide a completion date for the element. If your jurisdiction does not have a particular element, and a higher level of government has the authority pertaining to your jurisdiction, please indicate this in the comments column. If your jurisdiction has any of the **underlined and bolded** elements, please provide a copy of the document to the contact listed on the front and indicate method in the comments column (i.e. available on the web, will email or mail).

Element	Yes, No, N/A	Comments and/or Weblink
<b>Planning Capabilities</b>		
Comprehensive or Land-Use Plan		Date:
Capital Improvement Plan		Date:
Transportation Plan / Highway Department		Date:
Emergency Operations Plan		Date:
Local Recovery Plan		Date:
Debris Management Plan		Date:
Firewise or other fire mitigation plan		Date:
Economic Development Plan <i>City</i>	<i>2015</i>	Date: <i>under county EOP</i>
<b>Policies/Ordinance</b>		
Zoning Ordinance		
Building Code		Version:
Floodplain Ordinance		Date:
Drainage/Stormwater Ordinance		
Site Plan Review Requirements		
Historic Preservation Ordinance		

Element	Yes, No, N/A	Comments and/or Weblink
<b>Program</b>		
National Flood Insurance Program (NFIP)		
NFIP Community Rating System (CRS) program		If so, what is your current level rating?
National Weather Service (NWS) Storm Ready Certification		
Firewise Community Certification		
Building Code Effectiveness Grading (BCEGs)		
ISO Fire Rating	Rating: 6	information from fire chief
Public Education or information programs (i.e., responsible water use, fire safety, household preparedness, or environmental education)		
Mutual Aid Agreements	yes	
<b>Studies/Reports/Maps</b>		
Critical Facilities Inventory	yes	details in last mitigation plan
Vulnerable Population Inventory		
<b>Staff/Department</b>		<b>Full Time or Part Time?</b>
Building Code Official / Building Inspector		
Engineer		
Development Planner		
NFIP Floodplain Administrator		
Mapping Specialist (GIS)		
Public Works Official		
Emergency Management Coordinator	Glenn Eagen	County
Local Emergency Planning Committee	Glenn Eagen	county
Sanitation Department		
Highway/Transportation Department		
Economic Development Department		
Housing Department		
Historic Preservation		



Element	Yes, No, N/A	Comments and/or Weblink
<b>Non-Governmental Organizations (NGOs)</b>	<b>Is there a local chapter? Yes or No</b>	
American Red Cross		
Salvation Army		
Veterans Groups		
Local Environmental Organization		
Homeowner Associations		
Neighborhood Associations		
Chamber of Commerce	Yes	Shelbina
Community Organizations (Lions, Kiwanis, etc.)		
<b>Financial Resources</b>		<b>Is your jurisdiction able to? Yes or No</b>
Apply for Community Development Block Grants		Yes
Fund projects thru Capital Improvements funding		
Authority to levy taxes for specific purposes		
Fees for water, sewer, gas, or electric services		Yes
Impact fees for new development		
Incur debt through general obligation bonds		Yes
Incur debt through special tax bonds		
Incur debt through private activities		
Withhold spending in hazard prone areas		

**For plan updates, the plan maintenance process outlined in your previous plan requires all participating jurisdictions to incorporate the requirements of the mitigation plan into other planning mechanisms, when appropriate. A key element of effective implementation of mitigation is for the mitigation plan to be incorporated in existing authorities, policies, programs, and resources. Next to each applicable planning mechanism, indicate how your jurisdiction incorporated the previous mitigation plan. If no incorporation has occurred, please explain, including background information detailing any challenges preventing incorporation.**

Planning Capabilities	Method of Incorporation Since Previous Plan or Challenges Preventing Incorporation
Comprehensive or Land-Use Plan	
Capital Improvement Plan	
Transportation Plan / Highway Department	
Emergency Operations Plan	
Local Recovery Plan	
Debris Management Plan	
Firewise or other fire mitigation plan	
Economic Development Plan	

## Additional Questions

1. How is your government structure organized? (Commission, Mayor/City Council; how many members)

Mayor - 1  
City Council - 4

2. List any other past or ongoing projects or programs designed to reduce disaster losses, these may include projects to protect critical facilities. Be sure to include pending or approved projects submitted for FEMA mitigation grants.

3. Describe any hazard-related concerns or issues regarding the vulnerability of special needs populations, such as the elderly, disabled, low-income, or migrant farm workers.

4. How many outdoor warning sirens are in your community? 1

How are they activated (indicate responsible department/personnel)?

911 Center

5. Does your community utilize any other warning systems such as Cable Override, Reverse 911, etc? If so, please describe. N/A

6. Does your community have designated public tornado shelters/saferooms? If so, are they constructed in accordance with FEMA standards? Yes, no

Please provide address locations: Shelbyville Christian Church  
302 E 3rd St Shelbyville

7. Identify residential, commercial and industrial development in your jurisdiction since last plan update.

8. Describe development trends and expected growth areas. Is any new development expected to occur in the 100-year floodplain? Is any new development expected to occur in any other known hazard areas? If possible, please provide a map indicating potential/planned growth areas.

no

9. Are any new facilities or infrastructure planned for construction during the next five years? If so, please provide facility name and purpose along with proposed locations, if known.

no

10. Please list major employers in your jurisdiction with an estimated number of employees.

Shelby County Courthouse - 55  
Shelby County Ambulance - 20  
US Post Office - 4  
Shelby County Health Dept - 10

City of Shelbyville - 3

11. Please list Mitigation Planning Committee members who served during the development of the previously approved plan. Was the process set forth for monitoring the implementation of the previously approved mitigation plan adhered to? Did the Committee meet as was specified in the previously approved plan? Why or why not? YES

Gina Mesmer - city clerk  
Randy Shores - city superintendent

12. Describe your jurisdiction's participation in the NFIP. Include information about how compliance with the NFIP is enforced locally.

# VULNERABILITY ASSESSMENT

The purpose of this worksheet is to assess the vulnerable buildings, populations, critical facilities, infrastructure, and other important assets in your community by using the best available data to complete the table. Use the table on the next page to compile a detailed inventory of specific assets at risk including critical facilities and infrastructure; natural, cultural, and historical assets; and economic assets. In the natural hazard column of the asset inventory table, indicate (by assigned abbreviation) which of the following hazards the asset is vulnerable to:

Natural Hazards	
Flooding (Major & Flash) - <b>RF</b>	Drought - <b>D</b>
Levee Failure - <b>LF</b>	Extreme Temperature - <b>ET</b>
Dam Failure - <b>DF</b>	Severe Thunderstorm (incl. winds, hail, lightning) - <b>ST</b>
Earthquake - <b>EQ</b>	Severe Winter Weather (incl. snow, ice, severe cold) - <b>SWW</b>
Land Subsidence / Sinkholes - <b>LSS</b>	Tornadoes - <b>T</b>
Drought - <b>D</b>	Wildfire - <b>WF</b>

## Critical Facilities and Infrastructure

A critical facility may be defined as one that is essential in providing utility or direction either during the response to an emergency or during the recovery operation. FEMA's HAZUS-MH loss estimation software uses the following three categories of critical assets. 'Essential facilities' are those that if damaged would have devastating impacts on disaster response and/or recovery. 'High potential loss facilities' are those that would have a high loss or impact on the community. Transportation and lifeline facilities are third category of critical assets; examples are provided below.

### Essential Facilities

Hospitals and other medical facilities  
 Police stations  
 Fire station  
 Emergency Operations Centers

### High Potential Loss Facilities

Power plants  
 Dams/levees  
 Military installations  
 Hazardous material sites  
 Schools  
 Shelters  
 Day care centers  
 Nursing homes  
 Main government buildings

### Transportation and Lifeline

Highways, bridges, and tunnels  
 Railroads and facilities  
 Bus facilities  
 Airports  
 Water treatment facilities  
 Natural gas facilities and pipelines  
 Oil facilities and pipelines  
 Communications facilities

## Economic Assets

Economic assets at risk may include major employers or primary economic sectors, such as agriculture, whose losses or inoperability would have severe impacts on the community and its ability to recover from disaster.



Name of Asset	Address	Area (sq.ft.)	Replacement Value (Insured) (\$)	Contents Value (\$)	Occupancy/ Capacity (#)	Natural Hazards
High Potential Loss Facilities such as power plants, dams/levees, military installations, hazardous materials sites, shelters, day care centers, nursing homes, main government buildings (Do not include schools—they will be reported by the school districts)						
Tricia Wiseman Daycare	104 S. Adams Shelbyville	N/A	N/A	N/A		EA, DE, ST, Snow, T
Beth Drebenstedt Daycare	302 E Monroe Shelbyville	N/A	N/A	N/A		"
Christian Church Shelter	302 E 3rd Shelbyville	N/A	N/A	N/A		"
City Hall	106 S. Washington Shelbyville	N/A	N/A	N/A		"
Peoples Health Clinic	5th St.	"	"	"		"
Kimberly Daycare	104 W 3rd Shelbyville	"	"	"		"
Transportation and Lifelines such as highways, bridges, and tunnels; railroads and facilities, bus facilities, airports, water treatment facilities, natural gas facilities and pipelines, oil facilities, oil facilities and pipelines, communications facilities						
Shelbyville Airport	Lake Rd	N/A	N/A	N/A		"
Shelbyville Water Tower	3rd St.	"	"	"		"

\*If replacement cost data is not available, use the best available data (assessed valuation or other method for estimating cost) and explain any data deficiencies.

**Economic Assets (Major Employers, etc)**

Asset	Address	Product/Service	Value (if known)	Number of Employees	Hazards
SC Courthouse	100 E Main Shelbyville	Court offices	N/A	55	EQ, D, F, ST S, W, T
USDA	Main St. Shelbyville	Govt AG	"		"
City of Shelbyville	106 S. Washington	Local Govt	"	3	"
Peoples Clinic	5th St. Shelbyville	Health Clinic	"		"
Health Dept	700 E. Main Shelbyville	Local Health	"		"



## HISTORIC HAZARD EVENTS

Please fill out the sheet on the next page for each significant hazard event that affected **Your Jurisdiction**. **Make as many copies as necessary to record all events** and complete with as much detail as possible. This includes all events associated with the hazards listed below that have caused previous damage in your jurisdiction. It is especially important to capture events that either were not included in the previous Hazard Mitigation Plan or occurred since the plan was completed. Attach supporting documentation, photocopies of newspaper articles, or other original sources.

Jurisdiction	City of Shelbyville
Type of event	Tornado
Nature and magnitude of event	EF-1
Location	408 E 6 <sup>th</sup> St Shelbyville
Date of event	March 6, 2017
Injuries	0
Deaths	0
Property damage	Yes, tree fell on house
Infrastructure damage	
Crop damage	
Business/economic impacts	
Road/school/other closures	
Other damage	
Insured losses	
Federal/state disaster relief funding	
Source of information	
Comments	

## HISTORIC HAZARD EVENTS (continued)

Please fill out the sheet on the next page for each significant hazard event that affected **Your Jurisdiction**. **Make as many copies as necessary to record all events** and complete with as much detail as possible. This includes all events associated with the hazards listed below that have caused previous damage in your jurisdiction. It is especially important to capture events that either were not included in the previous Hazard Mitigation Plan or occurred since the plan was completed. Attach supporting documentation, photocopies of newspaper articles, or other original sources.

<b>Jurisdiction</b>	
<b>Type of event</b>	
<b>Nature and magnitude of event</b>	
<b>Location</b>	
<b>Date of event</b>	
<b>Injuries</b>	
<b>Deaths</b>	
<b>Property damage</b>	
<b>Infrastructure damage</b>	
<b>Crop damage</b>	
<b>Business/economic impacts</b>	
<b>Road/school/other closures</b>	
<b>Other damage</b>	
<b>Insured losses</b>	
<b>Federal/state disaster relief funding</b>	
<b>Source of information</b>	
<b>Comments</b>	

## ASSESSMENT OF PREVIOUSLY PROPOSED ACTIONS

**Jurisdiction:** City of Shelbyville

The contractor/plan development facilitator has provided a list of actions proposed in the previously approved plan for each jurisdiction. Use the worksheet below to evaluate whether each action is still current, feasible, desirable, and/or creates benefit that outweighs the cost.

The worksheet should include information on the status of the action and progress made in implementation, if any. This includes:

- For **completed actions** provide a description of the implementation process. This may be a success story you would like to publicize in your community.
- Some of the actions might have been **ongoing** in nature, such public information and education programs. When this is the case, indicate what activity has occurred during the previous five years, and indicate if this program is still viable enough that it should be carried on into the future.
- If **no progress** has been made in the implementation of a given action, discuss why. Note that implementation is not a requirement. However, if no progress has been made, perhaps this is an action that would be appropriate to delete in the updated plan.

During review of the previously approved actions, consider whether any new actions should be proposed. Perhaps damages from a recent hazard event have indicated the need for new approaches to protect property and life. Review the problem statements from the updated plan for ideas. Also review the FEMA publication *Mitigation Ideas: A Resource for Reducing Risk to Natural Hazards (January 2013)*.

#	Action	Status			Description of Implementation Activities or Reasons for Lack of Progress	Keep - ✓ Delete - X Modify - M
		Complete	Ongoing	No Progress		
1819	update/Provide generators for shelters		✓		need funds to provide generators	✓
1818	NDA Radio			✓		X
1820	Tabletop exercises		✓			✓

#	Action	Status			Description of Implementation Activities or Reasons for Lack of Progress	Keep - ✓ Delete - X Modify - M
		Complete	Ongoing	No Progress		
221	Encourage landowner to inspect levees and dams					✓



Action: Cellular Connectivity

## Multi-Jurisdictional Hazard Mitigation Plan

### Data Collection Questionnaire

#### For Special Districts

County: Shelby

Special District Name: Public Water Supply Dist #1 of Shelby

Return by: \_\_\_\_\_

Please complete this data collection questionnaire as accurately and completely as possible as this information will appear in the mitigation plan. A data collection questionnaire must be completed for each "jurisdiction" that wishes to be included in the plan. According to FEMA's definition a jurisdiction is any local government, including counties, municipalities, cities, towns, school districts, special districts, councils of government, and tribal organizations. Any of these entities as well as publicly funded colleges and universities that do not participate in the planning process **will not** be eligible applicants for FEMA mitigation funding programs. Please note: School Districts and other Educational Institutions should complete the Data Collection Questionnaire indicated "For School Districts and Educational Institutions".

Prepared by: Peggy O'Laughlin

Phone: 573-633-2242

Email: shelbypwsd@marktwain.net

Date: 11-14-22

**Please return questionnaires by mail, email, or fax to:**

Name: Peggy O'Laughlin

Address: PO Box 259 Shelbyville MO 63469

Email: shelbypwsd@marktwain.net

Fax: 573-633-1405

# CAPABILITY ASSESSMENT & INCORPORATION OF EXISTING PLANS, STUDIES, REPORTS AND TECHNICAL INFORMATION

The purpose of this section is to collect information to document existing capabilities as well as determine existing plans, studies, reports, and technical information that may need to be incorporated in the mitigation plan. Although some of this information may have been captured in your previous mitigation plan, it is important to ensure this information is current in the plan update

Please indicate which of the following your jurisdiction has in place. For elements that do not pertain to your type of public entity, please indicate with "N/A". If applicable, please provide a completion date for the element. If your jurisdiction does not have a particular element, and a higher level of government has the authority pertaining to your jurisdiction, please indicate this in the comments column. If your jurisdiction has any of the **underlined and bolded** elements, please provide a copy of the document to the contact listed on the front and indicate method in the comments column (i.e. available on the web, will email or mail).

Element	Yes, No, N/A	Comments and/or Weblink
<b>Planning Capabilities</b>		
Capital Improvement Plan	Date: <i>yes</i>	
Emergency Operations Plan	Date: <i>yes</i>	
Continuity of Operations Plan	Date: <i>yes</i>	
Community Wildfire Protection Plan	Date:	
Other:		
<b>Policies</b>		
<i>emergency procedures</i>		
<i>emergency equipment</i>		
<i>sources of assistance</i>		
<b>Programs</b>		
Cross-Connection Program	<i>yes</i>	
Hydrant Flushing Program	<i>yes</i>	
Public Education/Awareness		
Tree Trimming Program		
Mutual Aid Agreements	<i>yes</i>	
Other:		

Element	Yes, No, N/A	Comments and/or Weblink
Studies/Reports/Maps		
Evacuation Route Map		
Critical Facilities Inventory		
Staff/Department		Full Time or Part Time?
Tony Stiefel Manager		
Philip Magruder Field Worker		
Peggy O'Laughlin Office Supr		
Samantha Chinn Assistant		
Financial Resources		Is your jurisdiction able to? Yes or No
Fund projects thru Capital Improvements funding		yes
Fees for water, sewer, gas, or electric services		yes
Incur debt through general obligation bonds		
Incur debt through special tax bonds		
Incur debt through private activities		
Withhold spending in hazard prone areas		



**For plan updates, the plan maintenance process outlined in your previous plan requires all participating jurisdictions to incorporate the requirements of the mitigation plan into other planning mechanisms, when appropriate. A key element of effective implementation of mitigation is for the mitigation plan to be incorporated in existing authorities, policies, programs, and resources. Next to each applicable planning mechanism, indicate how your jurisdiction incorporated the previous mitigation plan. If no incorporation has occurred, please explain, including background information detailing any challenges preventing incorporation.**

Planning Capabilities	Method of Incorporation Since Previous Plan or Challenges Preventing Incorporation
Capital Improvement Plan	
Emergency Operations Plan	
Continuity of Operations Plan	
Firewise or other Fire Mitigation Plan such as Community Wildfire Protection Plan	

## Additional Questions

1. How is your Special District structure organized? (Board of Directors, Commission, how many members)

*5 member Board of Directors*

2. List any past or ongoing public education or information programs, such as for responsible water use, fire safety, household preparedness, or environmental education.

*backflow devices*

*Cross connection*

*water conservation in drought emergencies*

3. List any other past or ongoing projects or programs designed to reduce disaster losses, these may include projects to protect critical facilities. Be sure to include pending or approved projects submitted for FEMA mitigation grants.

4. Please list Mitigation Planning Committee members who served during the development of the previously approved plan. Was the process set forth for monitoring the implementation of the previously approved mitigation plan adhered to? Did the Committee meet as was specified in the previously approved plan? Why or why not?

# VULNERABILITY ASSESSMENT

The purpose of this worksheet is to assess the vulnerable buildings, populations, critical facilities, infrastructure, and other important assets in your community by using the best available data to complete the table. Use the table on the next page to compile a detailed inventory of specific assets at risk including critical facilities and infrastructure; natural, cultural, and historical assets; and economic assets. In the natural hazard column of the asset inventory table, indicate (by assigned abbreviation) which of the following hazards the asset is vulnerable to:

Natural Hazards	
Flooding (Major & Flash) - <b>RF</b>	Drought - <b>D</b>
Levee Failure - <b>LF</b>	Extreme Temperature - <b>ET</b>
Dam Failure - <b>DF</b>	Severe Thunderstorm (incl. winds, hail, lightning) - <b>ST</b>
Earthquake - <b>EQ</b>	Severe Winter Weather (incl. snow, ice, severe cold) - <b>SWW</b>
Land Subsidence / Sinkholes - <b>LSS</b>	Tornadoes - <b>T</b>
Drought - <b>D</b>	Wildfire - <b>WF</b>

## Critical Facilities and Infrastructure

A critical facility may be defined as one that is essential in providing utility or direction either during the response to an emergency or during the recovery operation. FEMA's HAZUS-MH loss estimation software uses the following three categories of critical assets. 'Essential facilities' are those that if damaged would have devastating impacts on disaster response and/or recovery. 'High potential loss facilities' are those that would have a high loss or impact on the community. Transportation and lifeline facilities are third category of critical assets; examples are provided below.

### Essential Facilities

Fire station  
Emergency Operations  
Centers

### High Potential Loss Facilities

Power plants  
Dams/levees  
Hazardous material sites  
Main government buildings

### Transportation and Lifeline

Highways, bridges, and tunnels  
Railroads and facilities  
Bus facilities  
Airports  
Water treatment facilities  
Natural gas facilities and pipelines  
Oil facilities and pipelines  
Communications facilities





## HISTORIC HAZARD EVENTS

Please fill out the sheet on the next page for each significant hazard event that affected **Your Jurisdiction**. **Make as many copies as necessary to record all events** and complete with as much detail as possible. This includes all events associated with the hazards listed below that have caused previous damage in your jurisdiction. It is especially important to capture events that either were not included in the previous Hazard Mitigation Plan or occurred since the plan was completed. Attach supporting documentation, photocopies of newspaper articles, or other original sources.

<b>Jurisdiction</b>	PWS #1 of Shelby Co	
<b>Type of event</b>	flooding	lightning
<b>Nature and magnitude of event</b>	wash out water lines	telemetry
<b>Location</b>		
<b>Date of event</b>		
<b>Injuries</b>		
<b>Deaths</b>		
<b>Property damage</b>		
<b>Infrastructure damage</b>	yes	yes
<b>Crop damage</b>		
<b>Business/economic impacts</b>		
<b>Road/school/other closures</b>		
<b>Other damage</b>		
<b>Insured losses</b>		
<b>Federal/state disaster relief funding</b>	FEMA	maintenance contract + insurance
<b>Source of information</b>		
<b>Comments</b>		

## HISTORIC HAZARD EVENTS (continued)

Please fill out the sheet on the next page for each significant hazard event that affected **Your Jurisdiction**. **Make as many copies as necessary to record all events** and complete with as much detail as possible. This includes all events associated with the hazards listed below that have caused previous damage in your jurisdiction. It is especially important to capture events that either were not included in the previous Hazard Mitigation Plan or occurred since the plan was completed. Attach supporting documentation, photocopies of newspaper articles, or other original sources.

<b>Jurisdiction</b>	
<b>Type of event</b>	
<b>Nature and magnitude of event</b>	
<b>Location</b>	
<b>Date of event</b>	
<b>Injuries</b>	
<b>Deaths</b>	
<b>Property damage</b>	
<b>Infrastructure damage</b>	
<b>Crop damage</b>	
<b>Business/economic impacts</b>	
<b>Road/school/other closures</b>	
<b>Other damage</b>	
<b>Insured losses</b>	
<b>Federal/state disaster relief funding</b>	
<b>Source of information</b>	
<b>Comments</b>	

## ASSESSMENT OF PREVIOUSLY PROPOSED ACTIONS

**Jurisdiction:** \_\_\_\_\_

The contractor/plan development facilitator has provided a list of actions proposed in the previously approved plan for each jurisdiction. Use the worksheet below to evaluate whether each action is still current, feasible, desirable, and/or creates benefit that outweighs the cost.

The worksheet should include information on the status of the action and progress made in implementation, if any. This includes:

- For **completed actions** provide a description of the implementation process. This may be a success story you would like to publicize in your community.
- Some of the actions might have been **ongoing** in nature, such public information and education programs. When this is the case, indicate what activity has occurred during the previous five years, and indicate if this program is still viable enough that it should be carried on into the future.
- If **no progress** has been made in the implementation of a given action, discuss why. Note that implementation is not a requirement. However, if no progress has been made, perhaps this is an action that would be appropriate to delete in the updated plan.

During review of the previously approved actions, consider whether any new actions should be proposed. Perhaps damages from a recent hazard event have indicated the need for new approaches to protect property and life. Review the problem statements from the updated plan for ideas. Also review the FEMA publication *Mitigation Ideas: A Resource for Reducing Risk to Natural Hazards (January 2013)*.

#	Action	Status			Description of Implementation Activities or Reasons for Lack of Progress	Keep – ✓ Delete – X Modify – M
		Complete	Ongoing	No Progress		





## Inventory of Critical/Essential Facilities and Infrastructure by Jurisdiction

Please find the line for your Jurisdiction below and indicate how many critical/essential facilities are located within your jurisdiction.

Jurisdiction	Airport Facility	Bus Facility	Childcare Facility	Communications Tower	Electric Power Facility	Emergency Operations	Fire Service	Government	Housing	Shelters	Highway Bridge	Hospital/Health Care	Military	Natural Gas Facility	Nursing Homes	Police Station	Potable Water Facility	Rail	Sanitary Pump Stations	School Facilities	Storm water Pump Stations	Tier II Chemical Facility	Wastewater Facility	TOTAL
Example	1		1		1				1											1				6
Unincorporated Shelby County																								
Bethel				X					1								2		1	1				
Clarence																								
Hunnewell																								
Leonard																								
Shelbina				X																1				
Shelbyville				X																				

telemetry  
TWSO



# Multi-Jurisdictional Hazard Mitigation Plan

## Data Collection Questionnaire

### For School Districts and Educational Institutions

County: Shelby

School District /  
Educational Institution Name: North Shelby

Return by: \_\_\_\_\_

Please complete this data collection questionnaire as accurately and completely as possible as this information will appear in the mitigation plan. A data collection questionnaire must be completed for each "jurisdiction" that wishes to be included in the plan. According to FEMA's definition a jurisdiction is any local government, including counties, municipalities, cities, towns, school districts, special districts, councils of government, and tribal organizations. Any of these entities as well as publicly funded colleges and universities that do not participate in the planning process **will not** be eligible applicants for FEMA mitigation funding programs.

Prepared by: Tinna Croy

Phone: 573-633-2410

Email: tinna.c@nshelby.k12.mo.us

Date: 11-14-22

**Please return questionnaires by mail, email, or fax to:**

Name: \_\_\_\_\_

Address: \_\_\_\_\_

Email: \_\_\_\_\_

Fax: \_\_\_\_\_

# CAPABILITY ASSESSMENT & INCORPORATION OF EXISTING PLANS, STUDIES, REPORTS AND TECHNICAL INFORMATION

The purpose of this section is to collect information to document existing capabilities as well as determine existing plans, studies, reports, and technical information that may need to be incorporated in the mitigation plan.

Please indicate which of the following your school district / institution has in place. For elements that do not pertain to you, please indicate with "N/A". If applicable, please provide a completion date for the element. If your school district / institution has any of the **underlined and bolded** elements, please provide a copy of the document to the contact indicated on the front of this questionnaire and indicate method in the comments column (i.e. available on the web, will email or mail).

Planning Elements	Yes/No	Date of Latest Version	Comments
Master Plan / <u>CSIP</u>	yes	2022-2023	
Capital Improvement Plan	no	NA	
<b><u>School Emergency Plan</u></b>			
Shelter in place protocols	yes	2022-2023	
Evacuation protocols			
Weapons Policy	yes	2022-2023	

## Administrative/Technical

Identify the technical and personnel resources responsible for activities related to hazard mitigation/loss prevention within your school district / institution.

Personnel Resources	Yes/No	Department/Position	Comments
Full-time building official (i.e. Principal)	yes	superintendent	
Emergency Manager	no		
Grant Writer	yes	librarian	
Public Information Officer	yes	supt.	

## Financial Resources

Identify whether your school district /institution has access to or is eligible to use the following financial resources for hazard mitigation.

Financial Resources	Accessible/Eligible to Use (Y/N)	Comments
Capital improvements project funding	yes	
Local funds	yes	
General obligation bonds	NO	
Special tax bonds	NO	
Private activities/donations	NO	
State and federal funds	NO	We use state funds for teacher salaries. 2 fed. funds are spec.

## Additional Capabilities Questions

1. Are your buildings equipped with a public address (PA) system or other emergency alert system?  
Please describe.

yes - intercom system  
textcaster for all stakeholders (in process)

2. Does your school buildings' have NOAA Weather Radios?

No

3. List any past or ongoing projects or programs designed to reduce disaster losses, these may include projects to protect facilities or provide education regarding hazards that could occur.

2022-2023-Update district Emergency Plan

4. List any other past or ongoing projects or programs designed to reduce disaster losses, these may include projects to protect critical facilities.

—

5. Do any of your buildings have designated tornado shelters or "saferooms"? If so, are they constructed in accordance with FEMA standards?

No

6. Did your school district / institution make any additions to buildings or construction new buildings since the last plan update (2010)? Please list the buildings and the improvement.

2017 Bond - renovation updates

7. Does your school district / institution plan to remodel or construct any buildings in the next 5 years? If so, please list the building or proposed building and planned improvements. Are any planned construction activities in known hazard areas?

No

8. What percentage is your projected enrollment expected to increase or decrease in the next five years?

5%

9. Do you have your own campus police? Please explain your police department or who you rely on for security needs.

No

We have an SRO 2 days a week.  
we can call anytime to change days<sup>3</sup>  
or increase security.

# VULNERABILITY ASSESSMENT

## Asset Inventory

The purpose of this worksheet is to assist in the assessment of the vulnerable populations and facilities owned by your school district / institution. Use the table below to compile a detailed inventory of specific assets at risk. In the natural hazard column of the asset inventory table, indicate (by assigned abbreviation) which of the following hazards the asset is vulnerable to:

Natural Hazards	
Flooding (Major & Flash) - RF	Drought - D
Levee Failure - LF	Extreme Temperature - ET
Dam Failure - DF	Severe Thunderstorm (incl. winds, hail, lightning) - ST
Earthquake - EQ	Severe Winter Weather (incl. snow, ice, severe cold) - SWW
Land Subsidence / Sinkholes - LSS	Tornadoes - T
Drought - D	Wildfire - WF

Please list buildings owned by your school district / institution including the square feet, values, and occupancy/capacity. If not applicable or not available, enter "N/A". Add as many rows as needed. **If you have this data in GIS formats, or other formats, please provide in lieu of this.**

Name of Asset	Address	Area (sq.ft.)	Replacement Value (Insured) (\$)	Contents Value (\$)	Occupancy/ Capacity (#)	Natural Hazards
North Shelby Schools	3071 Hwy 15				1	ST, T,
	Shelbyville					SWW, D,
						EQ, ET,
						F, U, HM,
						PH, CyD,





## HISTORIC HAZARD EVENTS

Please fill out one sheet for each significant hazard event that affected your school district / institution with as much detail as possible. This includes all hazard events listed on the Vulnerability Assessment page that have caused previous damage. Attach supporting documentation, photocopies of newspaper articles, or other original sources.

Type of event	Fire
Nature and magnitude of event	sig. damage to Elem Library smoke & water damage mainly El.
Location	North Shelby Elem.
Date of event	Jan. 2007
Injuries	None
Deaths	None
Property damage	Yes
Infrastructure damage	None
Crop damage	None
Business/economic impacts	—
Road/school/other closures	school closed for a few days
Other damage	—
Insured losses	yes
Federal/state disaster relief funding	None
Source of information	<del>XXXXXXXXXX</del>
Comments	

## HISTORIC HAZARD EVENTS (continued)

Please fill out one sheet for each significant hazard event that affected **your school district /institution** with as much detail as possible. This includes all hazard events listed on the Vulnerability Assessment page that have caused previous damage. Attach supporting documentation, photocopies of newspaper articles, or other original sources.

Type of event	Wind Storm
Nature and magnitude of event	Storm took roots off dugouts &
Location	damaged football bleachers North Shelby - ball fields
Date of event	Summer 2012-2013
Injuries	None
Deaths	None
Property damage	yes
Infrastructure damage	None
Crop damage	None
Business/economic impacts	—
Road/school/other closures	—
Other damage	—
Insured losses	yes
Federal/state disaster relief funding	—
Source of information	
Comments	

Goal 3: Investigate, implement, maintain, and enforce mitigation policies and programs that limit that impact of natural hazards; on the loss of life; on new and existing properties; on natural resources; on infrastructure; and on the local economy.

**Action MPC 1835**

<b>Action Worksheet</b>	
<b>Name of Jurisdiction:</b>	North Shelby School District
<b>Risk / Vulnerability</b>	
<b>Problem being Mitigated:</b>	Students are lacking adequate protection from natural hazards.
<b>Hazard(s) Addressed:</b>	AH
<b>Action or Project</b>	
<b>Action/Project Number:</b>	MPC 1835
<b>Name of Action or Project:</b>	Upgrade or build tornado safe rooms at the school
<b>Action or Project Description:</b>	Build a room that will protect students while at the school
<b>Applicable Goal Statement:</b>	Goal 3: Investigate, implement, maintain, and enforce mitigation policies and programs that limit that impact of natural hazards; on the loss of life; on new and existing properties; on natural resources; on infrastructure; and on the local economy.
<b>Estimated Cost:</b>	\$1,000,000
<b>Benefits:</b>	Students will have adequate protection.
<b>Plan for Implementation</b>	
<b>Responsible Organization/Department:</b>	Superintendent
<b>Action/Project Priority:</b>	High
<b>Timeline for Completion:</b>	<del>2019</del> 2023
<b>Potential Fund Sources:</b>	Emergency Preparedness Grants
<b>Local Planning Mechanisms to be Used in Implementation, if any:</b>	Hazard Mitigation Plan
<b>Progress Report</b>	
<b>Action Status</b>	Continuing
<b>Report of Progress</b>	Continuing to support upgrading or building a safe room

☆ generators for shelter

**North Shelby School District**

Goal 1: Public Awareness- Using a variety of communications avenue to increase the citizens awareness of and promote education about the natural hazards that may face, their vulnerability to these hazards, and how to lessen the effect of future natural hazards.

**Action MPC 1834**

<b>Action Worksheet</b>	
<b>Name of Jurisdiction:</b>	North Shelby School District
<b>Risk / Vulnerability</b>	
<b>Problem being Mitigated:</b>	Inability to quickly inform the public of impending disasters or severe weather warnings. Greater advance notice will allow residents and businesses more opportunity to take necessary precautions.
<b>Hazard(s) Addressed:</b>	ST T SWW ET
<b>Action or Project</b>	
<b>Action/Project Number:</b>	MPC 1834
<b>Name of Action or Project:</b>	Promote NOAA Radio Use in schools, nursing homes, businesses, private homes and large gatherings. <i>DELETE</i>
<b>Action or Project Description:</b>	Promote the use of NOAA radios
<b>Applicable Goal Statement:</b>	Goal 1: Public Awareness- Using a variety of communications avenue to increase the citizens awareness of and promote education about the natural hazards that may face, their vulnerability to these hazards, and how to lessen the effect of future natural hazards.
<b>Estimated Cost:</b>	\$0
<b>Benefits:</b>	Lives are protected.
<b>Plan for Implementation</b>	
<b>Responsible Organization/Department:</b>	Superintendent
<b>Action/Project Priority:</b>	High
<b>Timeline for Completion:</b>	2018 to 2020
<b>Potential Fund Sources:</b>	N/A
<b>Local Planning Mechanisms to be Used in Implementation, if any:</b>	Hazard Mitigation Plan
<b>Progress Report</b>	
<b>Action Status</b>	Continuing
<b>Report of Progress</b>	Continuing to support the use

*\* update radios & cameras on buses*  
~~*\* generator for*~~



# Multi-Jurisdictional Hazard Mitigation Plan

## Data Collection Questionnaire

### For School Districts and Educational Institutions

County: Shelby

School District /  
Educational Institution Name: Shelby County R-IV School District

Return by: Troy Clawson, Superintendent

Please complete this data collection questionnaire as accurately and completely as possible as this information will appear in the mitigation plan. A data collection questionnaire must be completed for each "jurisdiction" that wishes to be included in the plan. According to FEMA's definition a jurisdiction is any local government, including counties, municipalities, cities, towns, school districts, special districts, councils of government, and tribal organizations. Any of these entities as well as publicly funded colleges and universities that do not participate in the planning process **will not** be eligible applicants for FEMA mitigation funding programs.

Prepared by: Troy Clawson

Phone: 573-588-4961

Email: tclawson@cardinals.k12.mo.us

Date: 11/14/2022

**Please return questionnaires by mail, email, or fax to:**

Name: \_\_\_\_\_

Address: \_\_\_\_\_

Email: \_\_\_\_\_

Fax: \_\_\_\_\_

# CAPABILITY ASSESSMENT & INCORPORATION OF EXISTING PLANS, STUDIES, REPORTS AND TECHNICAL INFORMATION

The purpose of this section is to collect information to document existing capabilities as well as determine existing plans, studies, reports, and technical information that may need to be incorporated in the mitigation plan.

Please indicate which of the following your school district / institution has in place. For elements that do not pertain to you, please indicate with "N/A". If applicable, please provide a completion date for the element. If your school district / institution has any of the **underlined and bolded** elements, please provide a copy of the document to the contact indicated on the front of this questionnaire and indicate method in the comments column (i.e. available on the web, will email or mail).

Planning Elements	Yes/No	Date of Latest Version	Comments
Master Plan	NO	N/A	
Capital Improvement Plan	YES	Aug 2022	
<b>School Emergency Plan</b>			
Shelter in place protocols	YES		
Evacuation protocols			
Weapons Policy	YES	MCE Board Policy	

## Administrative/Technical

Identify the technical and personnel resources responsible for activities related to hazard mitigation/loss prevention within your school district / institution.

Personnel Resources	Yes/No	Department/Position	Comments
Full-time building official (i.e. Principal)	YES	Administration	1 Supt, 4 Principals
Emergency Manager	YES	Administration	Superintendent
Grant Writer	NO		
Public Information Officer	YES	Administration	Superintendent

## Financial Resources

Identify whether your school district /institution has access to or is eligible to use the following financial resources for hazard mitigation.

Financial Resources	Accessible/Eligible to Use (Y/N)	Comments
Capital improvements project funding	YES	(General Funds)
Local funds	YES	
General obligation bonds	NO	
Special tax bonds	NO	
Private activities/donations	YES	
State and federal funds	YES	

## Additional Capabilities Questions

1. Are your buildings equipped with a public address (PA) system or other emergency alert system? Please describe.

We have School Intercom systems in each building. We also use internal Radios for Admin, Custodial. FM radio Equipment on Buses for communication

2. Does your school buildings' have NOAA Weather Radios?

Yes

3. List any past or ongoing projects or programs designed to reduce disaster losses, these may include projects to protect facilities or provide education regarding hazards that could occur.

We work with our local depts to Educate students. We Attend Enbridge Pipeline meetings. We have yearly inspections from our loss prevention insurance. We also provide periodic drills yearly for all in district

4. List any other past or ongoing projects or programs designed to reduce disaster losses, these may include projects to protect critical facilities.

We work with our local depts to Educate students. We Attend Enbridge Meetings. We have yearly inspections from our loss prevention insurance. We also provide periodic drills yearly - in all in the district ; tornado, fire, Earthquake intruder Bomb

5. Do any of your buildings have designated tornado shelters or "saferooms"? If so, are they constructed in accordance with FEMA standards?

Yes - South Shelby Elem Gym - Built as a Tornado safe room.

6. Did your school district / institution make any additions to buildings or construction new buildings since the last plan update (2010)? Please list the buildings and the improvement.

Yes - South Shelby Elementary School - open Aug 2020  
Shelbina Elem building Sold, Clarence Elem. Building donated to City of Clarence

7. Does your school district / institution plan to remodel or construct any buildings in the next 5 years? If so, please list the building or proposed building and planned improvements. Are any planned construction activities in known hazard areas?

No

8. What percentage is your projected enrollment expected to increase or decrease in the next five years?

Enrollment expected to remain the same for the next 5 years.  
Enrollment fluctuates up and down  $\pm 2\%$ .

9. Do you have your own campus police? Please explain your police department or who you rely on for security needs.

Shelby Co R-IV Shares a resource officer (1/2 time) with North Shelby. SRO is a deputy sheriff for Shelby County. 3



# VULNERABILITY ASSESSMENT

## Asset Inventory

The purpose of this worksheet is to assist in the assessment of the vulnerable populations and facilities owned by your school district / institution. Use the table below to compile a detailed inventory of specific assets at risk. In the natural hazard column of the asset inventory table, indicate (by assigned abbreviation) which of the following hazards the asset is vulnerable to:

Natural Hazards	
Flooding (Major & Flash) - RF	Drought - D
Levee Failure - LF	Extreme Temperature - ET
Dam Failure - DF	Severe Thunderstorm (incl. winds, hail, lightning) - ST
Earthquake - EQ	Severe Winter Weather (incl. snow, ice, severe cold) - SWW
Land Subsidence / Sinkholes - LSS	Tornadoes - T
Drought - D	Wildfire - WF

Please list buildings owned by your school district / institution including the square feet, values, and occupancy/capacity. If not applicable or not available, enter "N/A". Add as many rows as needed. **If you have this data in GIS formats, or other formats, please provide in lieu of this.**

Name of Asset	Address	Area (sq.ft.)	Replacement Value (Insured) (\$)	Contents Value (\$)	Occupancy/ Capacity (#)	Natural Hazards
South Shelby Elementary	4154 Hwy 36			will be updated	350	EQ, ST, T, SWW
South Shelby MS/HS	Shelbina, MO 63468	89568		you updated	500	D, ET, F, EP
SSHS Concession #1	"	1476		you updated	10	EQ, HM, A, TA
SSHS Concession #2	"	1078		REPLACEMENT	10	" PH S
Football/Baseball Stadiums	"			VALUES	N/A	"
Bus Garage	"	2700		air handler	10	"
Green house	"	1620		CONTRACTOR	35	"



Bldg. #	Building Type	Name	Address 1	City	Square Footage	Property Value	Content Value
11	SOV	Concession Stand	4154 Hwy 36	Shelbina	1476.00	171648.09	27875.90
1	SOV	South Shelby High School	4154 Highway 36	Shelbina	89913.00	17928463.85	4257781.18
2	SOV	Concession	4154 Highway 36	Shelbina	1078.00	118897.88	14850.54
3	SOV	Football Stadium-Track	4154 Highway 36	Shelbina	2204.00	2110621.99	0.00
4	SOV	Bus Garage	4154 Hwy 36	Shelbina	2700.00	268738.66	43033.44
5	SOV	Greenhouse	4154 Highway 36	Shelbina	1620.00	58639.04	8663.80
12	SOV	Shelbina Literacy Center (Leased)	206 West Walnut	Shelbina	0.00	0.00	9034.76
13	SOV	South Shelby Elementary School	6685 Shelby 419	Shelbina	40000.00	6676800.00	1260000.00
14	SOV	Pole Barn Storage Building	6685 Shelby 419	Shelbina	2000.00	74900.00	0.00

## HISTORIC HAZARD EVENTS

Please fill out one sheet for each significant hazard event that affected **your school district / institution** with as much detail as possible. This includes all hazard events listed on the Vulnerability Assessment page that have caused previous damage. Attach supporting documentation, photocopies of newspaper articles, or other original sources.

Type of event	Tornado
Nature and magnitude of event	EF1
Location	South Shelby MS/HS School
Date of event	3/6/17
Injuries	None
Deaths	None
Property damage	Yes, to stadium, concessions + buildings
Infrastructure damage	Bleachers
Crop damage	N/A
Business/economic impacts	\$500,000 + insurance claim
Road/school/other closures	Shelby Co R-IV closed for 1 day
Other damage	
Insured losses	\$500,000 +
Federal/state disaster relief funding	None
Source of information	Unknown
Comments	

## HISTORIC HAZARD EVENTS (continued)

Please fill out one sheet for each significant hazard event that affected **your school district /institution** with as much detail as possible. This includes all hazard events listed on the Vulnerability Assessment page that have caused previous damage. Attach supporting documentation, photocopies of newspaper articles, or other original sources.

<b>Type of event</b>	
<b>Nature and magnitude of event</b>	
<b>Location</b>	
<b>Date of event</b>	
<b>Injuries</b>	
<b>Deaths</b>	
<b>Property damage</b>	
<b>Infrastructure damage</b>	
<b>Crop damage</b>	
<b>Business/economic impacts</b>	
<b>Road/school/other closures</b>	
<b>Other damage</b>	
<b>Insured losses</b>	
<b>Federal/state disaster relief funding</b>	
<b>Source of information</b>	
<b>Comments</b>	

**South Shelby School District**

Goal 1: Public Awareness- Using a variety of communications avenue to increase the citizens awareness of and promote education about the natural hazards that may face, their vulnerability to these hazards, and how to lessen the effect of future natural hazards.

**Action MPC 1836**

<b>Action Worksheet</b>	
<b>Name of Jurisdiction:</b>	South Shelby School
<b>Risk / Vulnerability</b>	
<b>Problem being Mitigated:</b>	Inability to quickly inform the public of impending disasters or severe weather warnings. Greater advance notice will allow residents and businesses more opportunity to take necessary precautions.
<b>Hazard(s) Addressed:</b>	ST T SWW ET
<b>Action or Project</b>	
<b>Action/Project Number:</b>	MPC 1836
<b>Name of Action or Project:</b>	<b>Promote NOAA Radio Use in schools, nursing homes, businesses, private homes and large gatherings.</b>
<b>Action or Project Description:</b>	Promote the use of NOAA radios
<b>Applicable Goal Statement:</b>	Goal 1: Public Awareness- Using a variety of communications avenue to increase the citizens awareness of and promote education about the natural hazards that may face, their vulnerability to these hazards, and how to lessen the effect of future natural hazards.
<b>Estimated Cost:</b>	\$0
<b>Benefits:</b>	Lives are protected.
<b>Plan for Implementation</b>	
<b>Responsible Organization/Department:</b>	Superintendent
<b>Action/Project Priority:</b>	High
<b>Timeline for Completion:</b>	2018 to 2020
<b>Potential Fund Sources:</b>	N/A
<b>Local Planning Mechanisms to be Used in Implementation, if any:</b>	Hazard Mitigation Plan
<b>Progress Report</b>	
<b>Action Status</b>	Continuing
<b>Report of Progress</b>	Continuing to support the use

Goal 3: Investigate, implement, maintain, and enforce mitigation policies and programs that limit that impact of natural hazards; on the loss of life; on new and existing properties; on natural resources; on infrastructure; and on the local economy.

**Action MPC 1837**

<b>Action Worksheet</b>	
<b>Name of Jurisdiction:</b>	South Shelby School <i>MS/HS Buildings</i>
<b>Risk / Vulnerability</b>	
<b>Problem being Mitigated:</b>	Students are lacking adequate protection from natural hazards.
<b>Hazard(s) Addressed:</b>	AH
<b>Action or Project</b>	
<b>Action/Project Number:</b>	MPC 1837
<b>Name of Action or Project:</b>	Upgrade or build tornado safe rooms at the school <i>MS/HS Building</i>
<b>Action or Project Description:</b>	Build a room that will protect students while at the school
<b>Applicable Goal Statement:</b>	Goal 3: Investigate, implement, maintain, and enforce mitigation policies and programs that limit that impact of natural hazards; on the loss of life; on new and existing properties; on natural resources; on infrastructure; and on the local economy.
<b>Estimated Cost:</b>	<del>\$1,000,000</del> <i>3,000,000</i>
<b>Benefits:</b>	Students will have adequate protection.
<b>Plan for Implementation</b>	
<b>Responsible Organization/Department:</b>	Superintendent
<b>Action/Project Priority:</b>	High
<b>Timeline for Completion:</b>	<del>2019</del> <i>2026</i>
<b>Potential Fund Sources:</b>	Emergency Preparedness Grants
<b>Local Planning Mechanisms to be Used in Implementation, if any:</b>	Hazard Mitigation Plan
<b>Progress Report</b>	
<b>Action Status</b>	Continuing
<b>Report of Progress</b>	Continuing to support upgrading or building a safe room

Shelby County, Missouri  
**PRESS RELEASE**

For Immediate Release

Contact: Anna Gill  
573-565-2203

**Shelby County Planning Committee Seeks Public Input**

Shelby County, MO — The public is encouraged to review and comment on the Shelby County Multi-Jurisdictional Hazard Mitigation Plan Update before it is finalized. The plan includes an updated strategy to reduce damage and losses caused by hazard events. The final draft of the plan will be available online and in hard copy at select public locations in Shelby County from February 1-15, 2023. The purpose is to provide information to the public on the Multi-Jurisdictional Hazard Mitigation Plan Update as well as gain public input.

Each year, thousands of American families are affected by disasters, and billions of dollars are spent on disaster recovery. Some disasters are predictable, and often, losses and damages can be reduced or eliminated. For these reasons, the Federal Disaster Mitigation Act of 2000 requires communities to develop an approved local hazard mitigation plan. Without such a plan, communities are not eligible for certain federal funding.

Representatives from county departments, the incorporated cities, public school districts, and other mitigation planning stakeholders worked together to develop this plan update. The planning committee addressed hazards ranging from extreme heat and severe winter storms to tornadoes and flooding—and considered the impacts of these events on local communities. Based on the results of an updated risk assessment of the hazards, committee members updated the strategies for their jurisdictions to reduce damages caused by the various hazards.

The planning committee would like input from the public on the updated strategy for Shelby County. Public comments will be considered by the Hazard Mitigation Planning Committee and incorporated into the plan, as appropriate.

From February 1, 2023 – February 15, 2023 the final draft plan will be available for your review at the following locations:

Online at: [marktwaincog.com](http://marktwaincog.com)

A hard copy can be reviewed during normal operating hours at: Shelby County Courthouse  
100 E Main Street, Shelbyville, MO

The final plan must be approved by the governing body of each participating jurisdiction, the Missouri State Emergency Management Agency, and FEMA before becoming official. The Mark Twain Regional Council of Governments has taken the lead in developing this plan. The point of contact is Anna Gill, Community Planner. For more information on this project, contact Anna Gill at 573-565-2203.